

JUMEIRAH
RESIDENCES
—
EMIRATES TOWERS

Presented by Canaletto Sky Real Estate LLC

IHR DEUTSCHER IMMOBILIENMARKLER INKLUSIVE RECHTSBERATUNG IN DUBAI !



ERWERBEN SIE PROVISIONSFREI DIREKT VOM BAUTRÄGER



CANALETTO SKY
REAL ESTATE

LEADERS IN GLOBAL HOSPITALITY



Jumeirah Hotels and Resorts have been at the forefront of global hospitality for over two decades. They proudly stand as the creators of internationally iconic properties such as Jumeirah Burj Al Arab and Jumeirah Marsa Al Arab in Dubai, Jumeirah Olhahali Island in the Maldives, and Jumeirah Capri Palace in Italy, to name just a few.

A REALM OF LUXURY IN LIVING SPACES



Jumeirah Residences represent an ultra-luxurious and serviced residential development brand, offering a lifestyle defined by exclusivity, originality and sophistication. Jumeirah Residences have successfully introduced Jumeirah Residences Marsa Al Arab, a collaboration with Meraas, where opulent residences and the breathtaking allure of a waterfront location come to life. As architects of magnificent design and hospitality, Meraas and Jumeirah Residences will yet again leave an indelible mark on Dubai's skyline with Jumeirah Residences Emirates Towers.



BUILT FOR SUCCESS

Set next to the heart of global business in Dubai, Jumeirah Residences Emirates Towers stand as the new architectural icons on the city's skyline.

This exclusive collection of residences offers one- to four-bedroom apartments, where every detail reflects thoughtful craftsmanship and refined living.

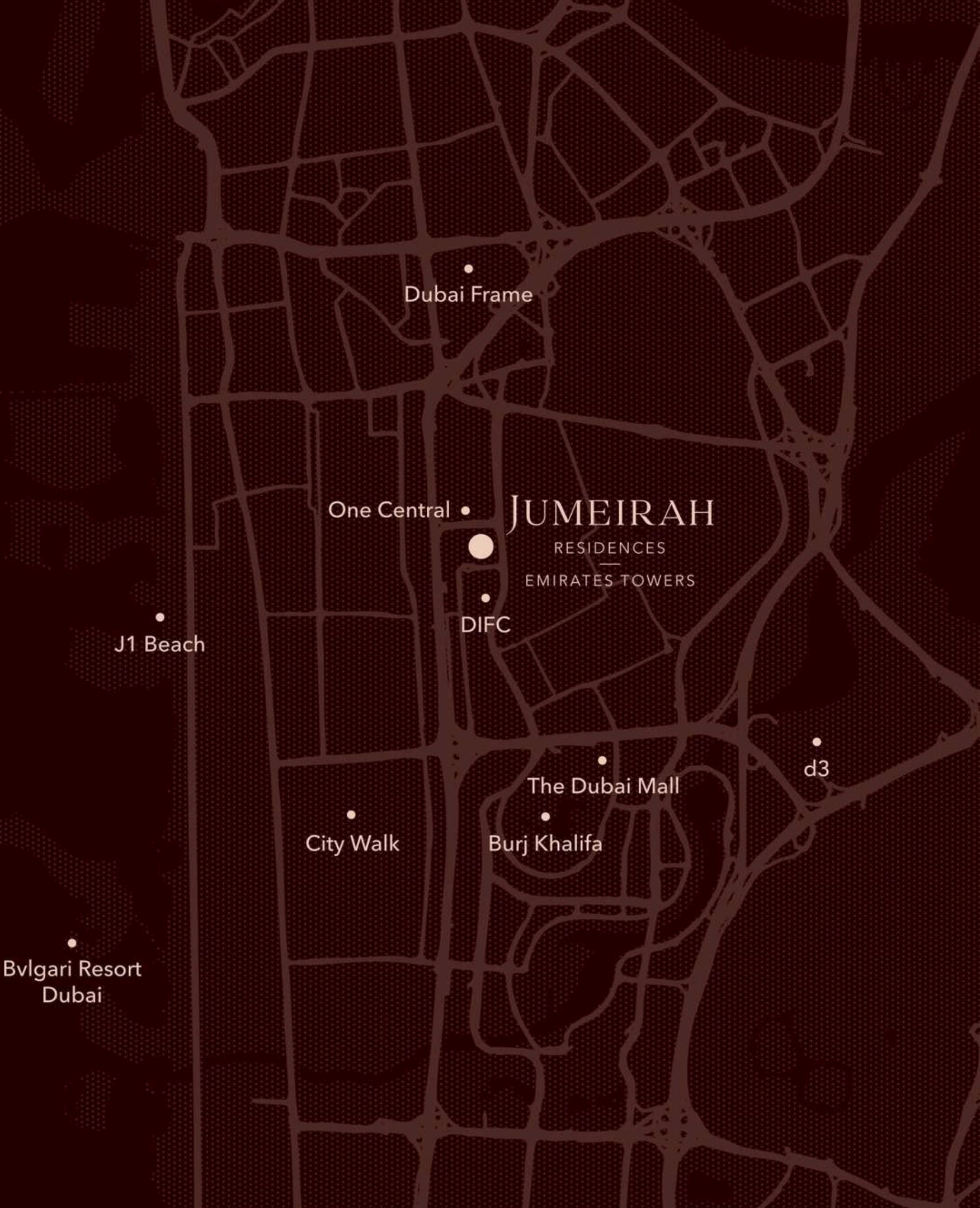
From sky pools to Jumeirah Signature Services, each element is designed to elevate the daily experience of discerning residents.

S U C C E S S L E A D S T O O N E L O C A T I O N

The residences offer seamless access to Sheikh Zayed Road and Al Khail Road, with key destinations such as City Walk, Downtown Dubai, and J1 Beach just minutes away.

Surrounded by landmarks like the Museum of the Future, DIFC, and Jumeirah Emirates Towers, this is more than a prime location. This dynamic district is home to global institutions and international businesses, as well as cultural and lifestyle destinations, including prestigious galleries and world-class dining.

One Central	5 minutes
The Dubai Mall	7 minutes
City Walk	10 minutes
Dubai Frame	13 minutes
Dubai Design District (d3)	15 minutes
J1 Beach	17 minutes
Bulgari Resort Dubai	20 minutes



JUMEIRAH

RESIDENCES

EMIRATES TOWERS

JUMEIRAH

EMIRATES TOWERS

Tower A
(First Release)

Tower B

Downtown Dubai

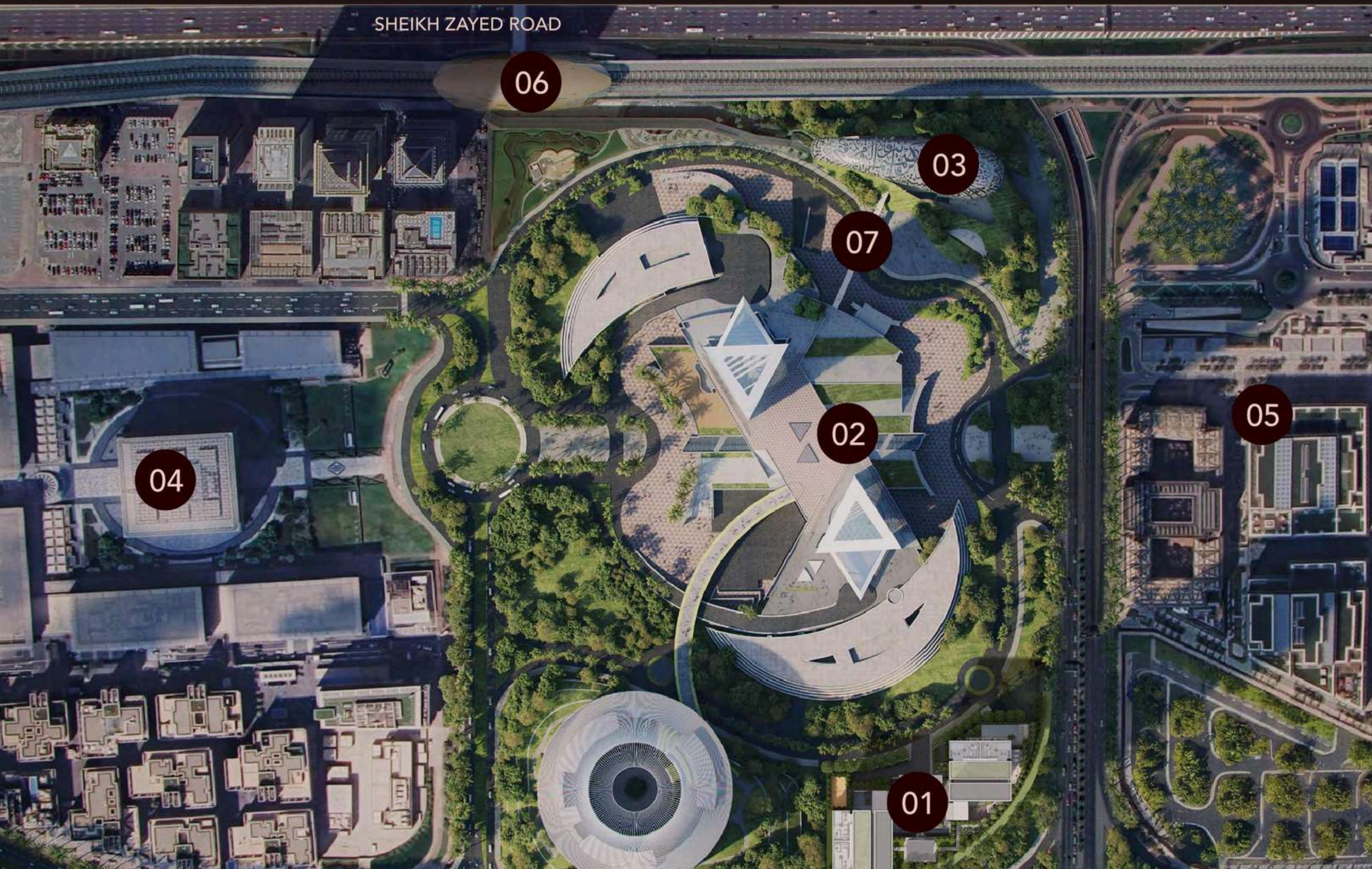
DIFC

Jumeirah Beach

Museum of the Future



THE DESTINATION



- 01 JUMEIRAH RESIDENCES EMIRATES TOWERS
- 02 JUMEIRAH EMIRATES TOWERS
- 03 MUSEUM OF THE FUTURE
- 04 DIFC
- 05 ONE CENTRAL
- 06 METRO STATION
- 07 PEDESTRIAN BRIDGE

Positioned to frame Dubai's most breathtaking views, from the Downtown skyline to the open sea, the towers are carefully oriented to offer uninterrupted vistas while ensuring complete privacy for every residence.

At the top, three exclusive sky terraces elevate daily life with an adults-only infinity pool, panoramic garden lounges, and a dramatic open-air event terrace — all floating above the city.



A PALETTE COMPOSED FOR ELEGANCE

A thoughtfully curated palette defines each space with quiet sophistication. The interior design exudes warmth, with caramel-toned accents, premium marble, and understated wood finishes adding depth and subtle richness. Clean lines shape the architectural flow, while fluted glass details introduce a sense of lightness and texture. A tone-on-tone foundation, grounded by a refined mix of stone and timber, creates a perfect balance.



WHERE EVERY NEED
IS ANTICIPATED



From personalised spa treatments to private dining and concierge, every service is tailored to match your pace. This is a lifestyle of seamless efficiency, where daily details are expertly managed, freeing you to focus on what matters most.

BASIC SERVICES

- 24/7 Security
- Concierge
- Public Area Maintenance
- Public Area Cleaning
- Lounge/Pool Attendants
- Door/Valet
- Lifeguards

À LA CARTE SERVICES

STANDARD SERVICES

- Laundry
- Housekeeping
- Childcare
- Car Care
- Maintenance/Engineering Services
- Groceries Service
- Away Service
- Transportation

SPA & FITNESS SERVICES

- A wide selection of Jumeirah rejuvenating SPA treatments and massages can be booked with a Jumeirah SPA therapist
- Hair-dressing services can be offered at the salon or at the residence
- Personal trainer is available upon request to deliver an individual training and/or meal plan and control training sessions

PRIVATE CHEF & EVENTS

- Jumeirah renowned chefs at a private meal service
- Personalised event planning

- 01 ENTRANCE
- 02 ARRIVAL TOWER LOBBY LOUNGE
- 03 CAR PARK ACCESS
- 04 RESTAURANT
- 05 PADEL COURT
- 06 ADULTS POOL
- 07 KIDS' POOL
- 08 SOCIAL HALL
- 09 MULTI-PURPOSE SPACE
- 10 DINING/EVENT
- 11 OPEN KITCHEN/EVENT
- 12 PLAYGROUND
- 13 SPLASH PLAYGROUND
- 14 BACK-OF-HOUSE ACCESS
- 15 POWDER ROOM
- 16 PET LAWN



ARRIVAL

Sheltered beneath a striking cantilever, the arrival zone offers a grand, warm welcome. The private entrance sets a calm, refined tone where the architecture appears to float and time seems to pause.





JUMEIRAH
RESIDENCES
EMIRATES TOWERS





TOWER B



L O B B Y

A sense of grandeur greets you the moment you arrive. The double-height lobby, tranquil garden courtyard, and elegant lounge set the tone for a lifestyle shaped by refinement.





FINE DINING

A world-renowned, branded restaurant will bring culinary excellence to the heart of the residences. This fine dining destination promises to deliver an experience shaped by craft, atmosphere and impeccable service, all just moments from home.





FAMILY POOL

Overlooking the iconic Museum of the Future, the family pool offers a sunlit retreat designed for relaxation and connection.





THE SOCIAL HALL

A refined lounge adjacent to the pool, the social hall is designed for connection and convenience.

YOGA & SPINNING STUDIO

The dedicated yoga and spinning studio overlooks the Museum of the Future, bringing light, movement, and inspiration into every session.





MULTI - PURPOSE SPACE

Whether for business, celebration or private moments, the multi-purpose event space offers room for any gatherings.

PRIVATE DINING AREA

The private dining area makes every moment special. Thoughtfully designed to host, gather, and celebrate with ease and sophistication, it also offers the option of a private chef for intimate gatherings and curated culinary experiences.





P A D E L C O U R T

Whether for a casual game or focused practice, the premium padel court offers an exceptional setting for play and performance.

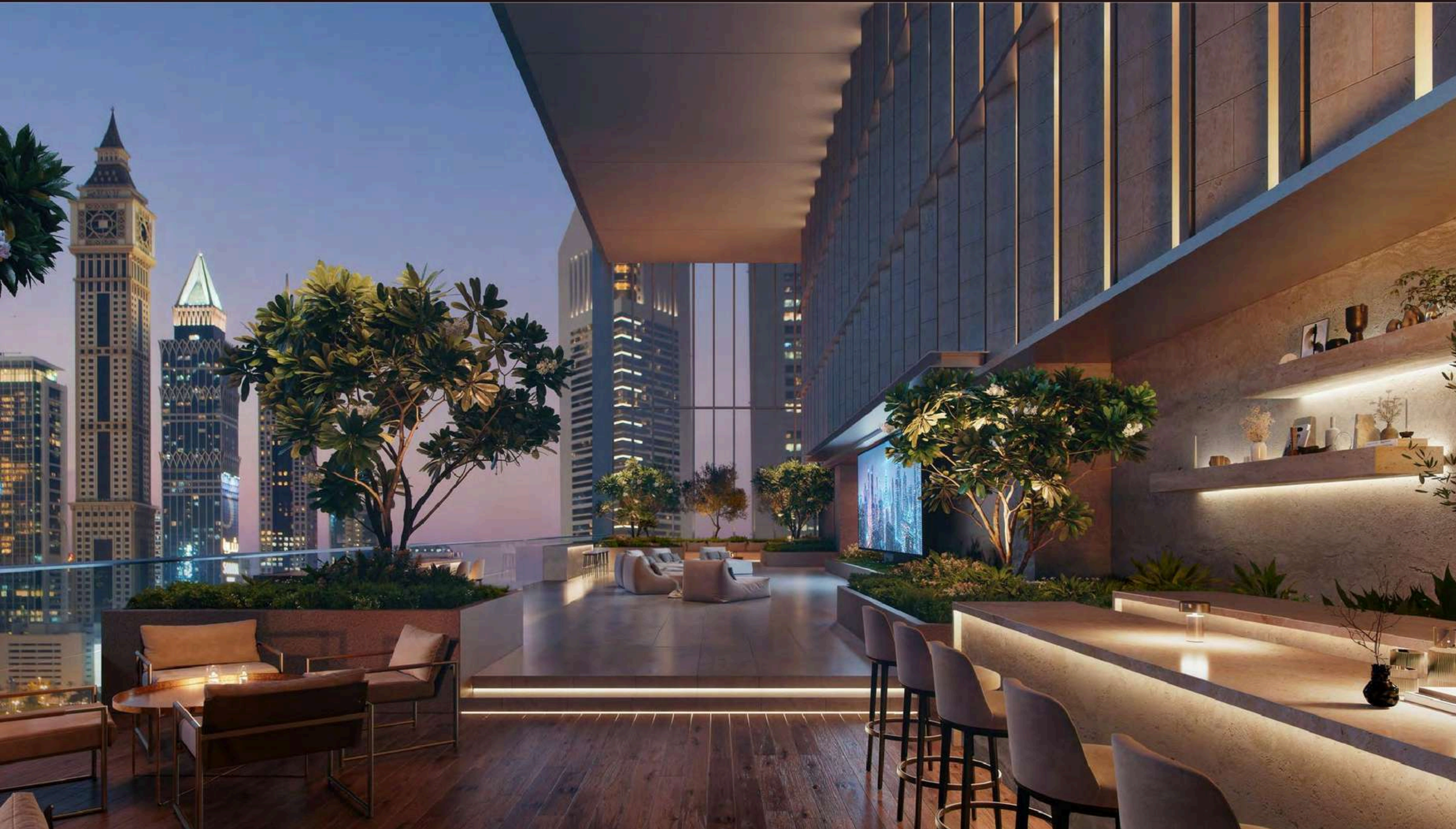


SKY POOL

Suspended high above the city, the adults-only infinity pool and terrace offer panoramic views in every direction. Sunlit daybeds, private cabanas, and an inviting poolside lounge create a space that elevates both mind and mood. For added ease, a dedicated toddlers' club on the same level provides a safe, playful environment just steps away.

SKY TERRACE

Host gatherings framed by skyline views in this intimate setting suspended above the city. The private sky terrace offers the perfect blend of exclusivity and dramatic perspective. Lounge seating, water features, and curated greenery create a natural rhythm, completing the sense of escape.





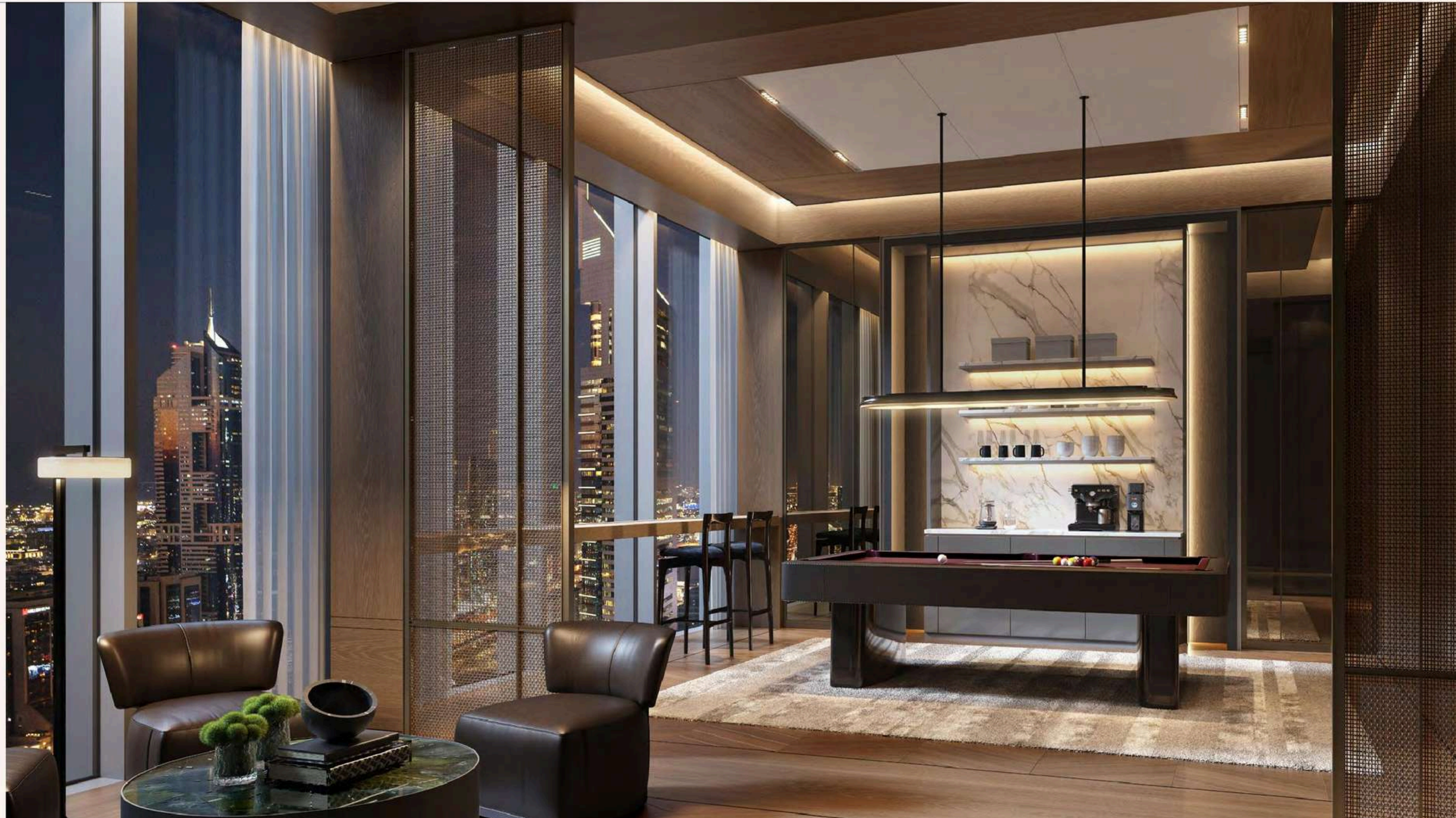
WELLNESS CLUB

The wellness club includes spa suites, saunas, and a fully equipped gym, all seamlessly connected to the sky pool and elevated by panoramic views. A dedicated nail studio adds to the offering, while a separate fitness floor ensures enhanced privacy for residents of select three- and four-bedroom homes.



GAME CORNER

Framed by extraordinary views from the top of the tower, the game corner offers a relaxed yet refined setting for downtime. With a pool table, plush lounge seating and an atmosphere designed for connection, it is the perfect place to unwind and entertain.





C O - W O R K I N G L O U N G E

A dedicated co-working lounge provides room for your ideas to grow. Its professional yet relaxed setting is ideal to seamlessly transition from moment of focus to connecting with like-minded residents.

PRIVATE CINEMA

Whether hosting private viewings or unwinding with loved ones, the private cinema is built for immersive moments and effortless comfort.



PERFECTION IS A MINDSET WE SHARE



From curated materials to thoughtful spatial flow, each element reflects an unwavering commitment to perfection. With no internal columns interrupting the interiors, spaces feel open, fluid, and elegantly unobstructed. Ranging from one- to four-bedroom apartments, these residences offer generous layouts and elegant details to suit a variety of lifestyles.

IHR DEUTSCHER IMMOBILIENMARKLER INKLUSIVE RECHTSBERATUNG IN DUBAI



Für ein Beratungsgespräch buchen Sie sich jetzt Ihren Termin:
KOSTENLOSES ERSTGESPRÄCH



CANALETTO SKY
REAL ESTATE

Hier geht's zu unserer Webseite:
CANALETTO SKY REAL ESATE LLC

dubai@canalettosky.com
+971 56 589 1112