

SOUL E V E R

Presented by Canaletto Sky Real Estate LLC

ke just this
nd. Down
d I saw
warm
t I
If
ther.
lean
ou
d back
read
ner
ward the
potential
sharing
hts.



PROJECT
BROCHURE

morning. We were lying on
in that nook where salt water
you, seeing me, noticing
as the sunlight trapped
treasure, like a precious
we could turn back the
whisper in our ears? /
imperfect
Sun
inde
take
the
as f
sky
und
of our n
sunrises.
Becomi

IHR DEUTSCHER IMMOBILIENMARKLER INKLUSIVE RECHTSBERATUNG IN DUBAI !



ERWERBEN SIE PROVISIONSFREI DIREKT VOM BAUTRÄGER



CANALETTO SKY
REAL ESTATE

Welcome

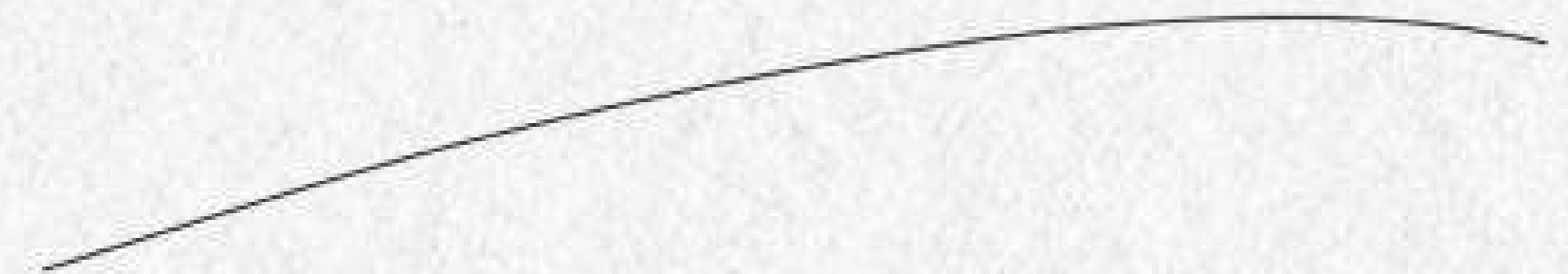


Home

INTRODUCTION

Introducing Soulever – two towers redefining luxury living in Dubai Maritime City.

Two luxury waterfront towers just steps from The Cove, The Forest and the Arabian Gulf. Thoughtfully designed residences offer expansive views at the height of modern luxury, where every detail is crafted for comfort, style, and connection.



*It seems like just this morning
We were lying on that
crescent moon of sand*

1. Location



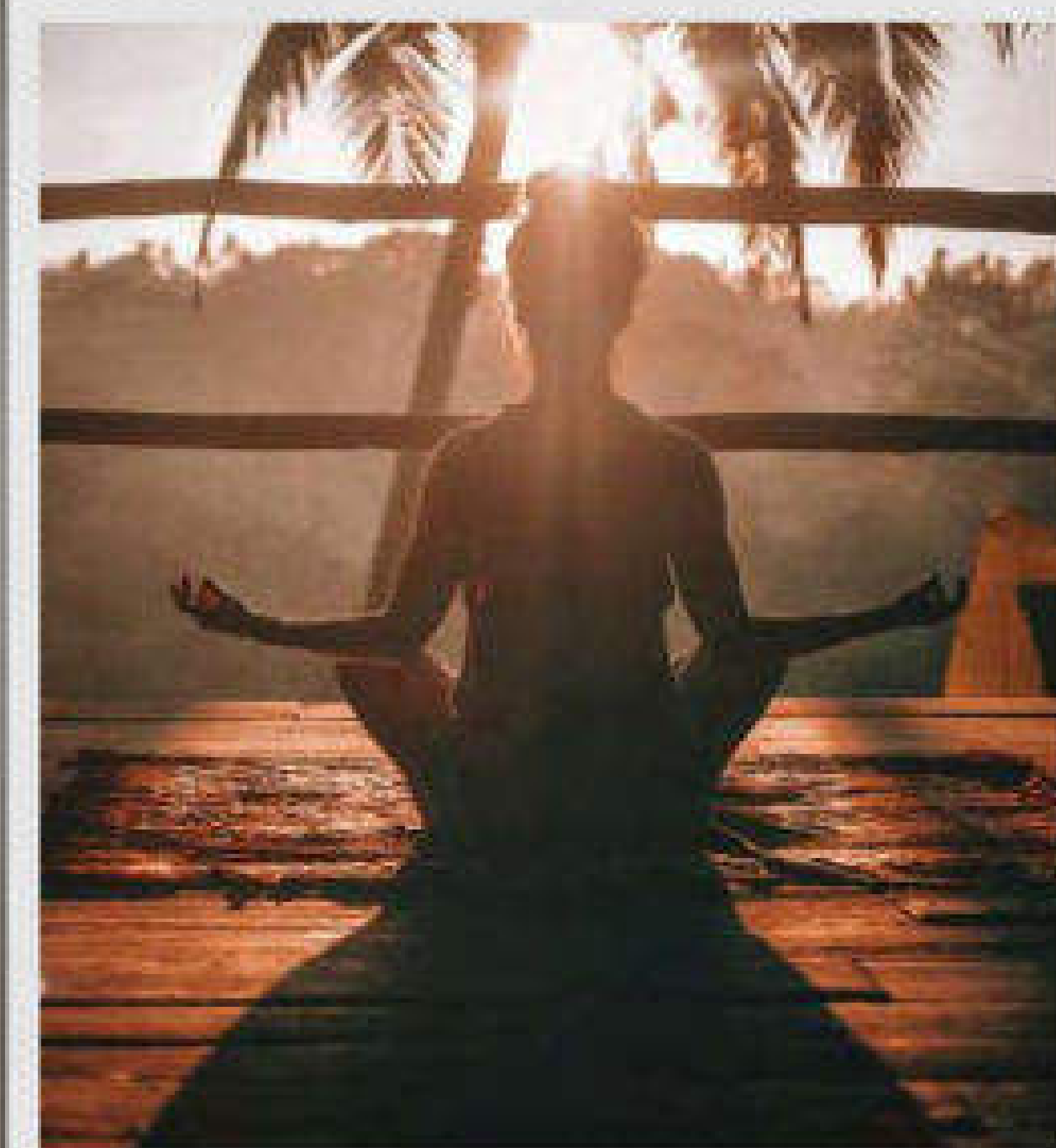
*Down in that nook
where salt meets
shore and stone*



BEST OF BOTH WORLDS

NATURE'S CALM, DUBAI'S ENERGY

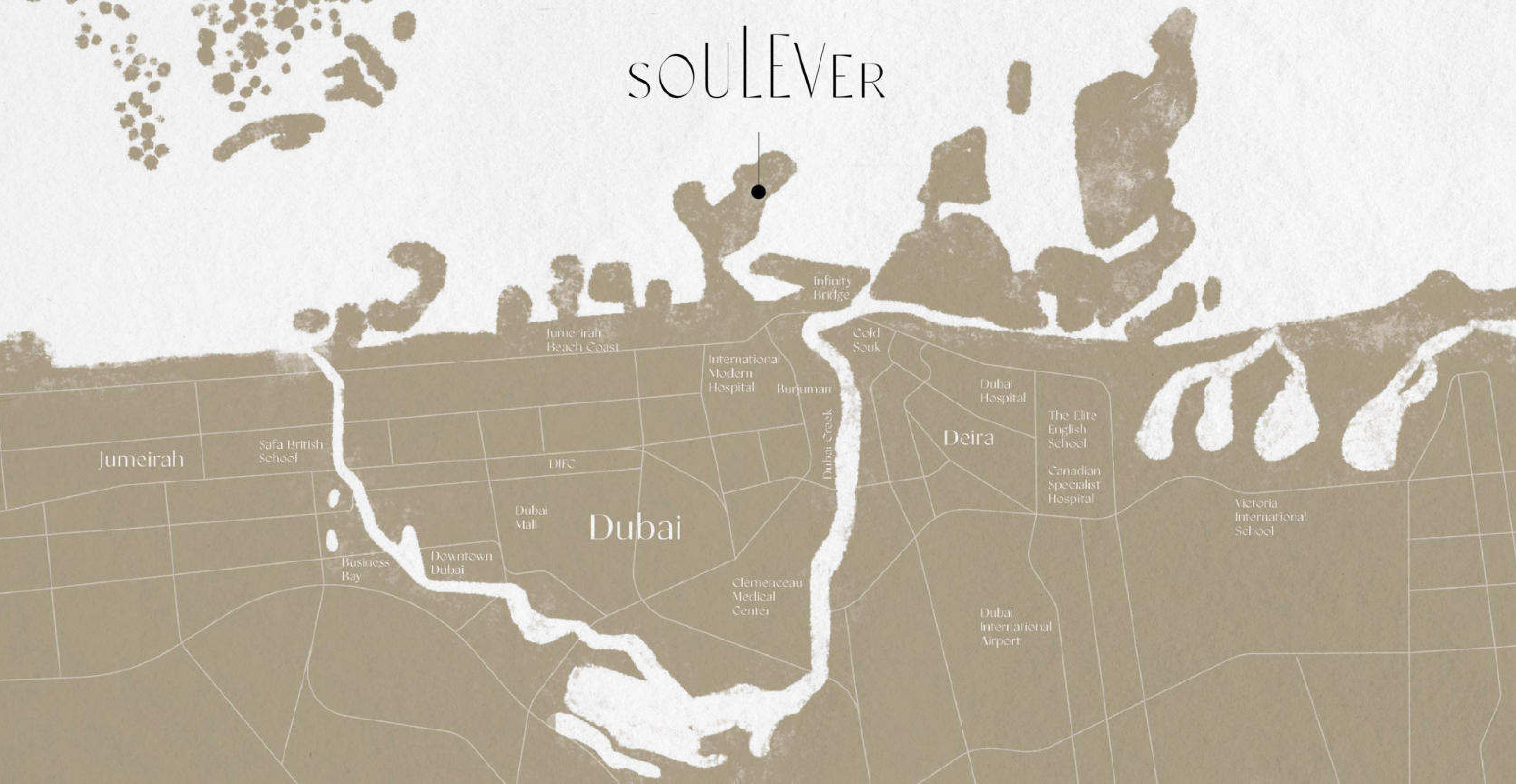
*Rising amid verdant green
shoreline surroundings,
Soulevar's luxury towers offer
stunning coastal views and a
serene connection to nature,
just steps from the Forest and the
Cove, yet close to the energy and
buzz of Dubai.*



MAP

In good company

SOULEVER



DUBAI MARITIME CITY

CLOSE AT HAND

Immerse yourself in Soulever's lively waterfront district – where culture, shopping, and destination restaurants are all just a footstep away.

Soulever's prime waterfront location in Dubai Maritime City is moments away from The Cove, The Forest and the Arabian Gulf, with world-class dining, shopping, and cultural experiences all within easy reach.

Designed for comfort and connection, Soulever offers a community sanctuary where every detail enhances daily living and creates a true sense of belonging.



And I saw you, seeing me, noticing you



*It was a moment warm as the
sunlight trapped beneath our backs*



KODAK PORTRA 400

56

KODAK PORTRA 400

23

24

THE COVE SEA, STYLE, SOUL

The Cove offers landscaped pools, lagoons and walkways, all with stunning sea views providing a natural sanctuary for residents, alongside world class experiences on your doorstep – all just moments from Dubai's business and cultural hubs.

THE COVE

*That I treasure,
like a precious stone
upon the shore*

Here, life flows in coastal harmony. Feel the gentle sea breeze, drink in the panoramic views, and enjoy relaxing moments with friends and family - all framed by the serene beauty of the sea.



KODAK PORTRA 400

56

KODAK PORTRA 400





*If we could turn back the
dials of time, would you whisper
in our ears?*



PROJECT

TWO OF A KIND

Soulever's towers soar 44 and 31 storeys, with light-filled terraces designed to capture breathtaking views of the sea from one side and the froest from the other, along with Dubai's ever evolving skyline – a statement of architectural elegance and refined living.

*Notes on the perfectly imperfect
pathway we'd tread together*



*Smooth at times, and veiled
like an indigo sky in others*



PROJECT

DUBAI'S NEXT POWER COUPLE

*Rising architectural towers,
Soulever's façades of curtain walls,
dark stucco, textured paint, and
bronze-tinted aluminum panels
radiate elegance and strength.*

Tastefully designed balconies with shifting planes and layered forms offer visual intrigue while framing breathtaking views of the Cove, the Forest, and the Dubai's skyline. Expansive glass and meticulous detailing bring light, openness, and a refined sense of calm to every space.

Soulever connects residents to both its stunning surroundings and a vibrant community. Thoughtful shared spaces and a prime location near Dubai's cultural, dining, and leisure destinations make luxury living feel effortlessly connected.



*And let our footsteps
tread as freshly as a
crisp blue summer sky*

COMMUNITY

SOULEVER SPIRITS

Soulever hums with life – the joyful sounds of children playing, the welcoming clink of glasses, and the subtle floral scents drifting from landscaped gardens and balcony plantings.

Architectural forms and innovative exteriors, including thoughtfully layered balconies which create visual interest, frame stunning views, and ensure privacy

Open-plan layouts across a range of residences - from spacious apartments to duplexes and chalets to palatial penthouses - offer meticulously designed living spaces for families, individuals, and couples alike.

Every detail reflects a commitment to comfort, connection, and elevated living, making Soulever more than a neighbourhood - but a place to live beautifully and in harmony with your surroundings.



Together, moving toward the unknown and all the dizzying potential of our new life ahead

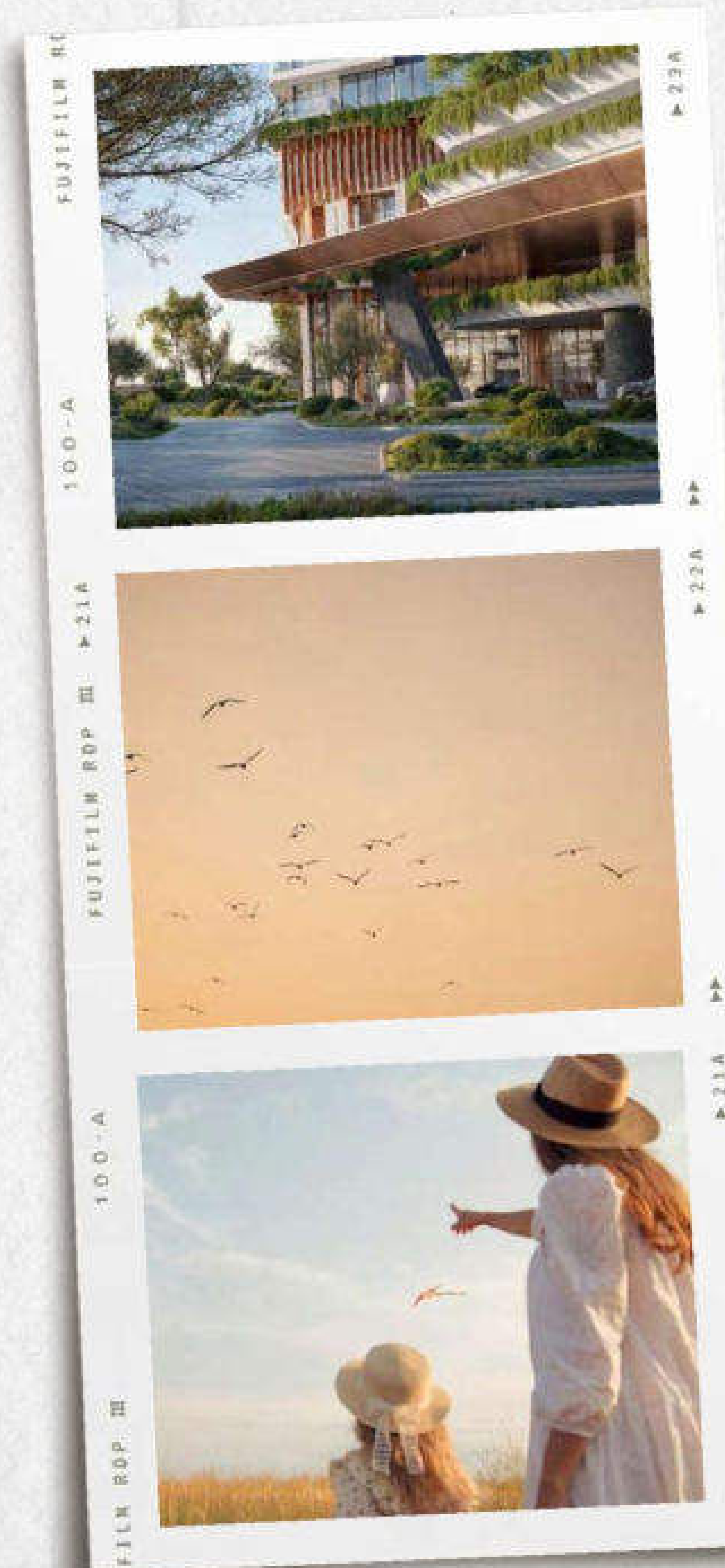
DETAILS - EXTERIORS

EVERY MOMENT ELEVATED

Sculptural, stylish, and perfectly positioned, Soulever's towers are designed to create striking silhouettes on the Dubai skyline, with expressed edges adding further elegance to the structure.

Each tower has been carefully oriented to capture views of the Arabian Gulf, the Cove, the Forest, and the Dubai skyline. The facades are curtain walls and Dark stucco, textured paint, and bronze tinted aluminum panels, while interiors feature open-plan layouts, muted tones, and natural light-filled spaces.

Mindfully designed residences - from apartments to duplexes and chalets to penthouses, offer comfort and stunning panoramas, seamlessly connecting private and shared spaces for a truly elevated living experience.

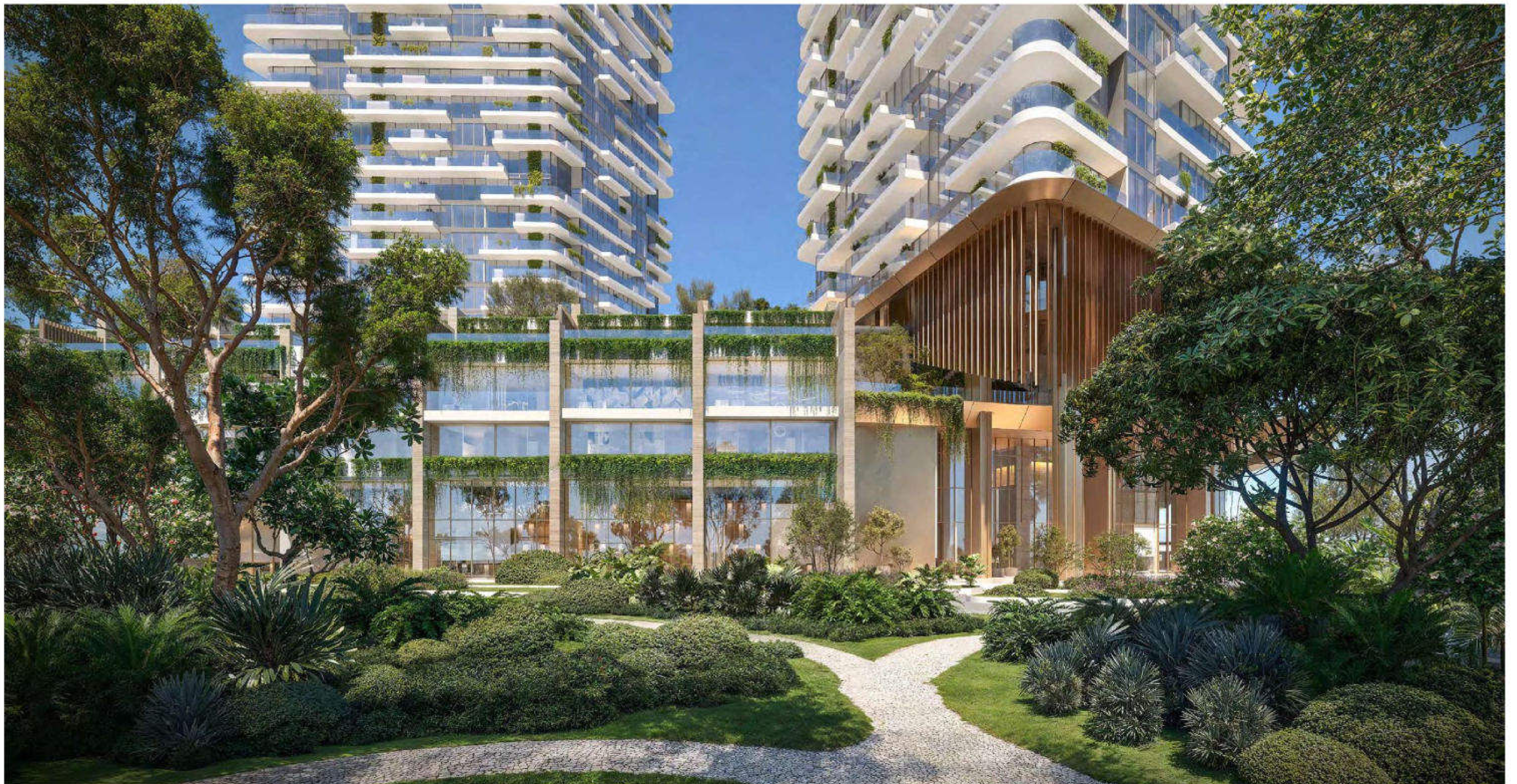


REDISCOVER YOUR ROOTS

GARDENS

Lush planted surroundings on the ground and podium levels, along with verdant terraces and balconies shaped by the towers' expressed edges, create a living experience rooted in nature.

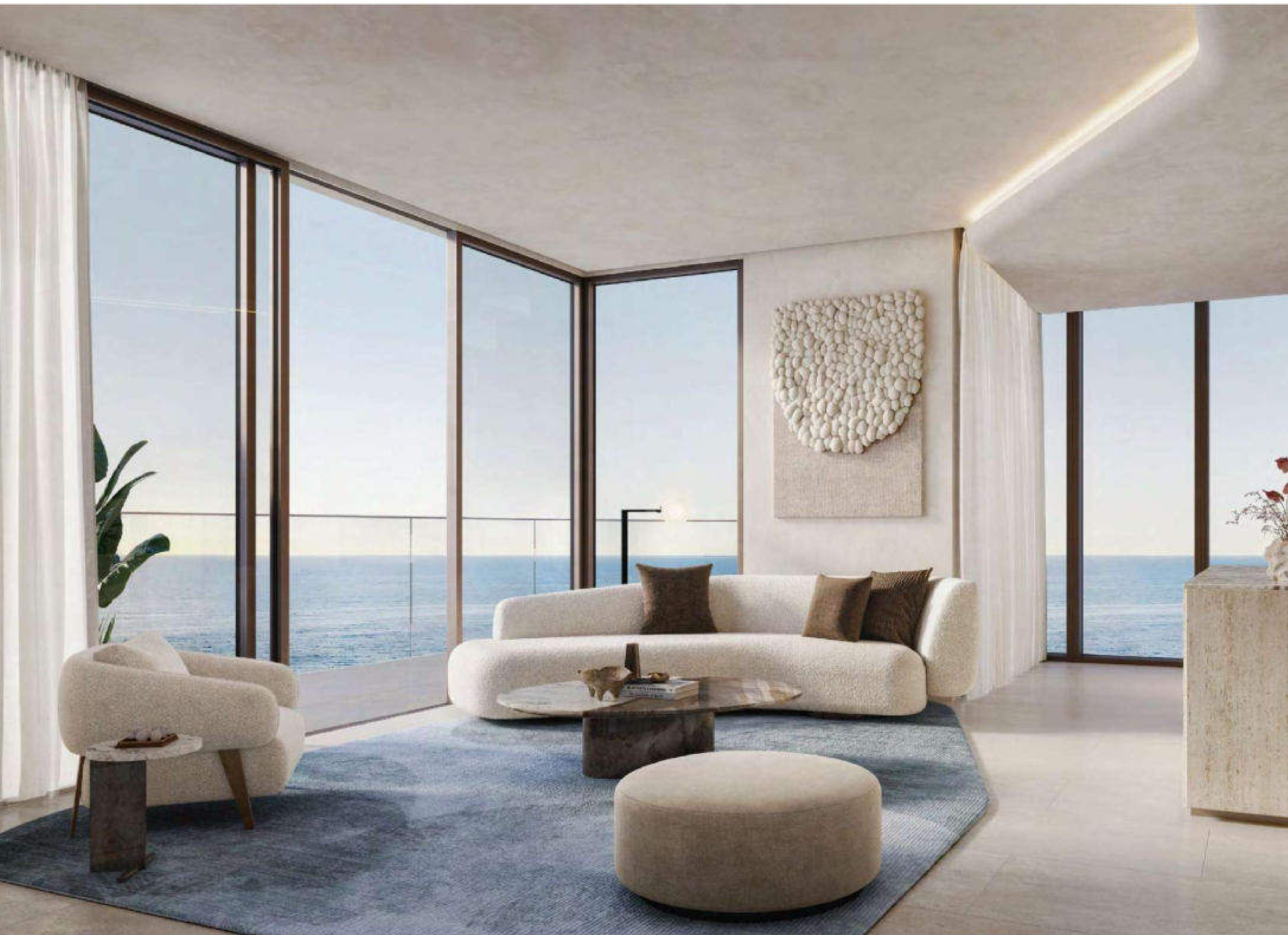
Sunlight, fresh sea air, and attentively designed green spaces flow naturally through daily life, offering residents the perfect backdrop to relax, gather with friends and family, and enjoy panoramic views in a setting that balances privacy, connection, and calm.



*Interiors shaped by the
landscape, with soft
neutral tones and finishes
of effortless sophistication.*

3. Interiors

LIVING SPACE



THE POETRY OF LIVING, PERFECTED

Soulever presents a collection of thoughtfully designed residences, from one- to three-bedroom apartments and exclusive podium chalets to expansive four-bedroom duplexes and five-bedroom penthouses.

Each home features open-plan living and private balconies, crafted to offer a unique blend of space, light, and elegance for every lifestyle.

LIVING SPACE

THE SOULEVER COLLECTION



*You and I, sharing
sunrises, and twinkling
Dubai nights*



Soulever presents an exquisite collection of residences, thoughtfully designed to suit every lifestyle. From elegant one-bedroom sanctuaries to expansive two- and three-bedroom residences, each space is crafted with timeless sophistication. For those seeking even greater grandeur, the offering extends to refined four-bedroom duplexes, distinctive podium chalets, and crowning penthouses that embody the pinnacle of waterfront living.

LIVING SPACE

A SANCTUARY OF LIGHT, SPACE, AND SERENITY

*Enter a serene haven where soaring
3.2-meter ceilings and open-plan
spaces flow effortlessly to sunlit
balconies framed by panoramic
views.*

Every detail is designed to inspire calm,
inviting you to unwind, pause, breathe, and
savor quiet moments while immersing yourself
in the timeless beauty of your surroundings.





*Becoming us, shaping our
future, step by step.*

KITCHEN

THE HEART OF THE HOME

Soulever's open-plan kitchens pair a timeless neutral palette with organic curves and natural stone. Sleek cabinetry flows into stone surfaces, creating effortless elegance.

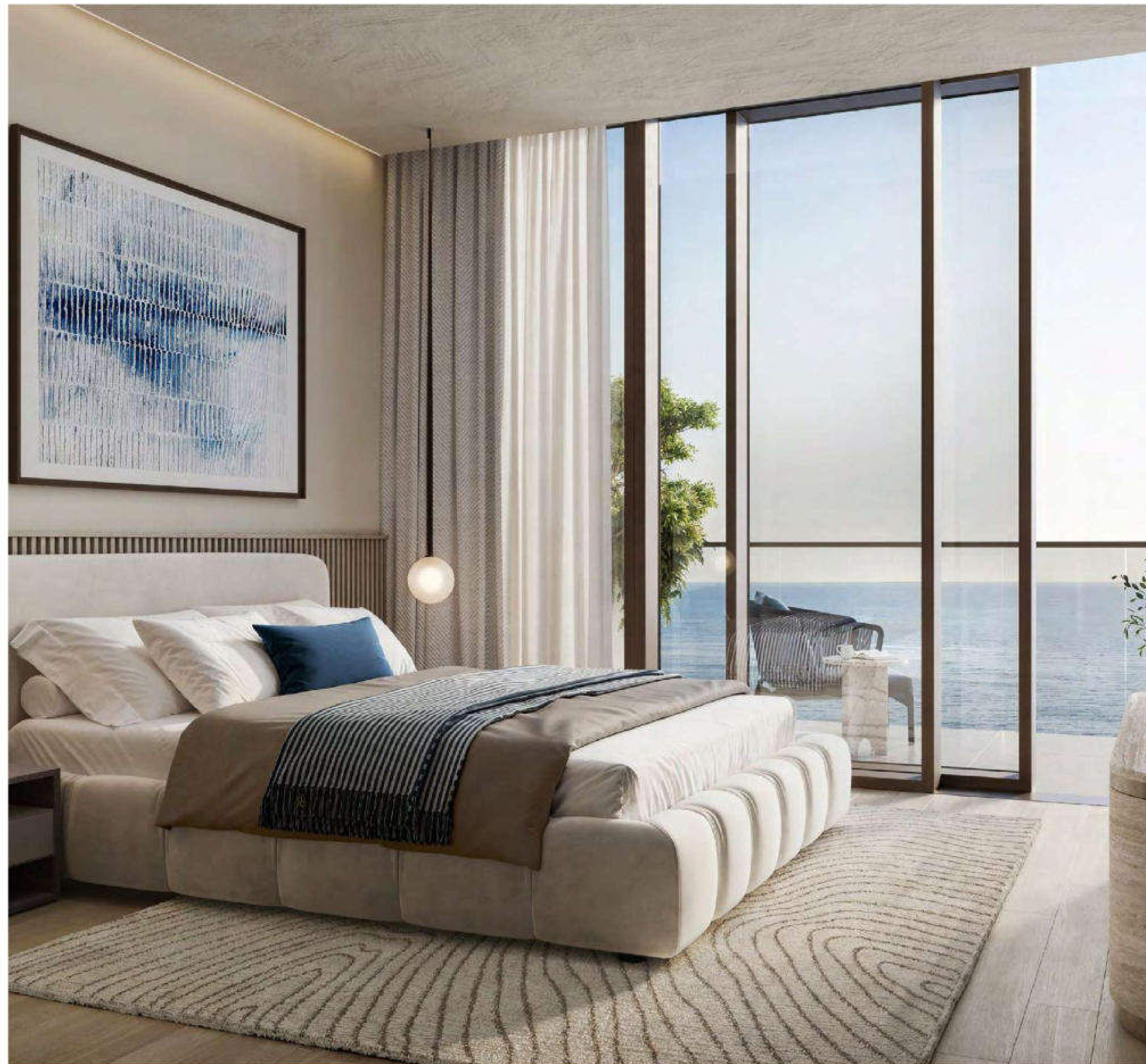
Expansive windows flood the space with light and sea views, while integrated appliances, hidden storage, and ambient lighting bring refined simplicity and ease.



YOUR PERSONAL RETREAT, REDEFINED

The master bedrooms at Soulever offer a serene and elegant retreat, with private en-suite bathrooms and thoughtfully integrated storage.

Organic, flowing shapes and calm surroundings create a tranquil sanctuary, perfectly designed for rest, rejuvenation, and personal retreat.

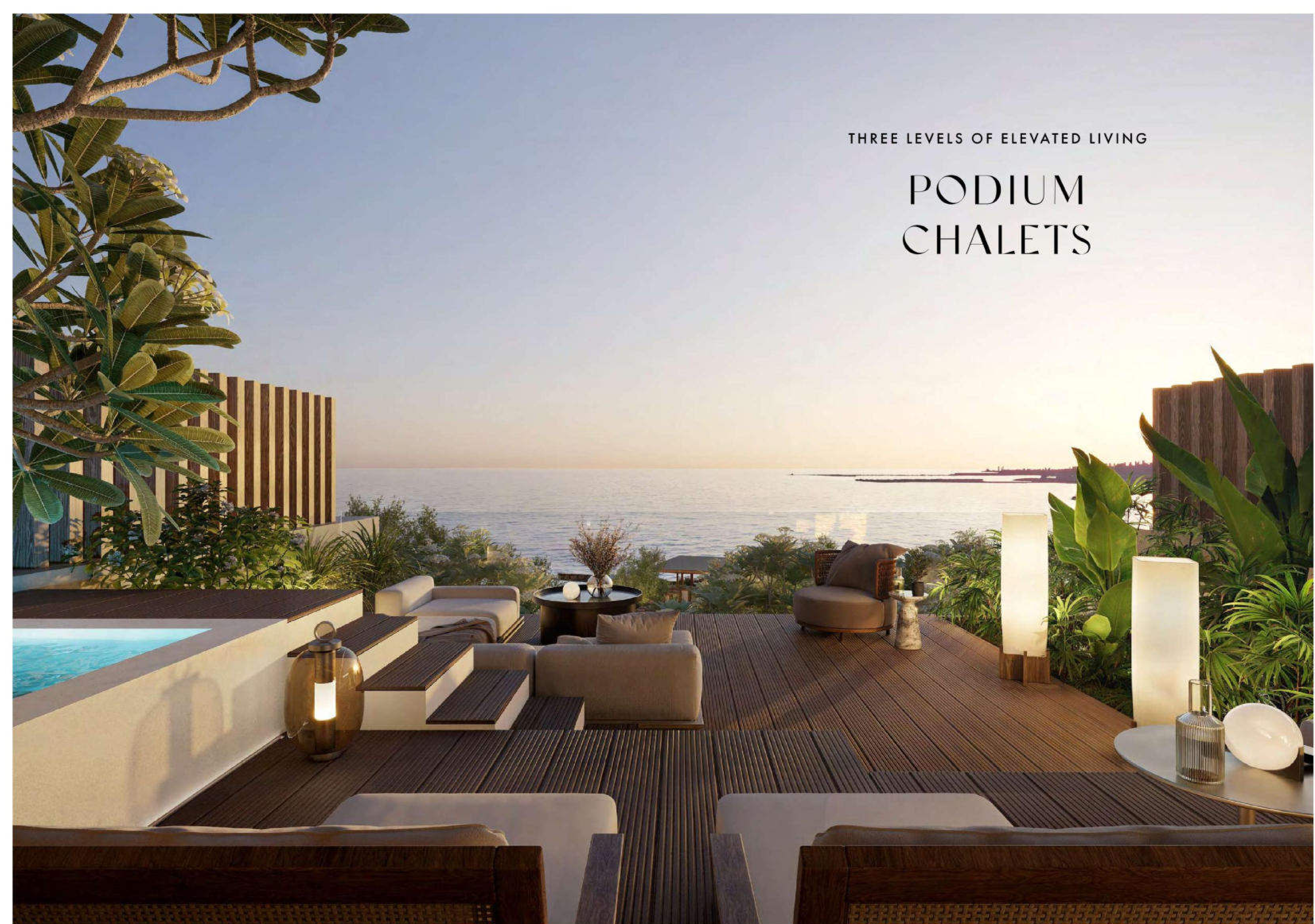




*Building a home to
hold life's quiet and loud
moments in*

THREE LEVELS OF ELEVATED LIVING

PODIUM CHALETS



PODIUM CHALETs



*Soulever's 2-Bedroom Podium Chalets
redefine waterfront living with a
seamless connection to The Cove's
vibrant dining and leisure scene.*

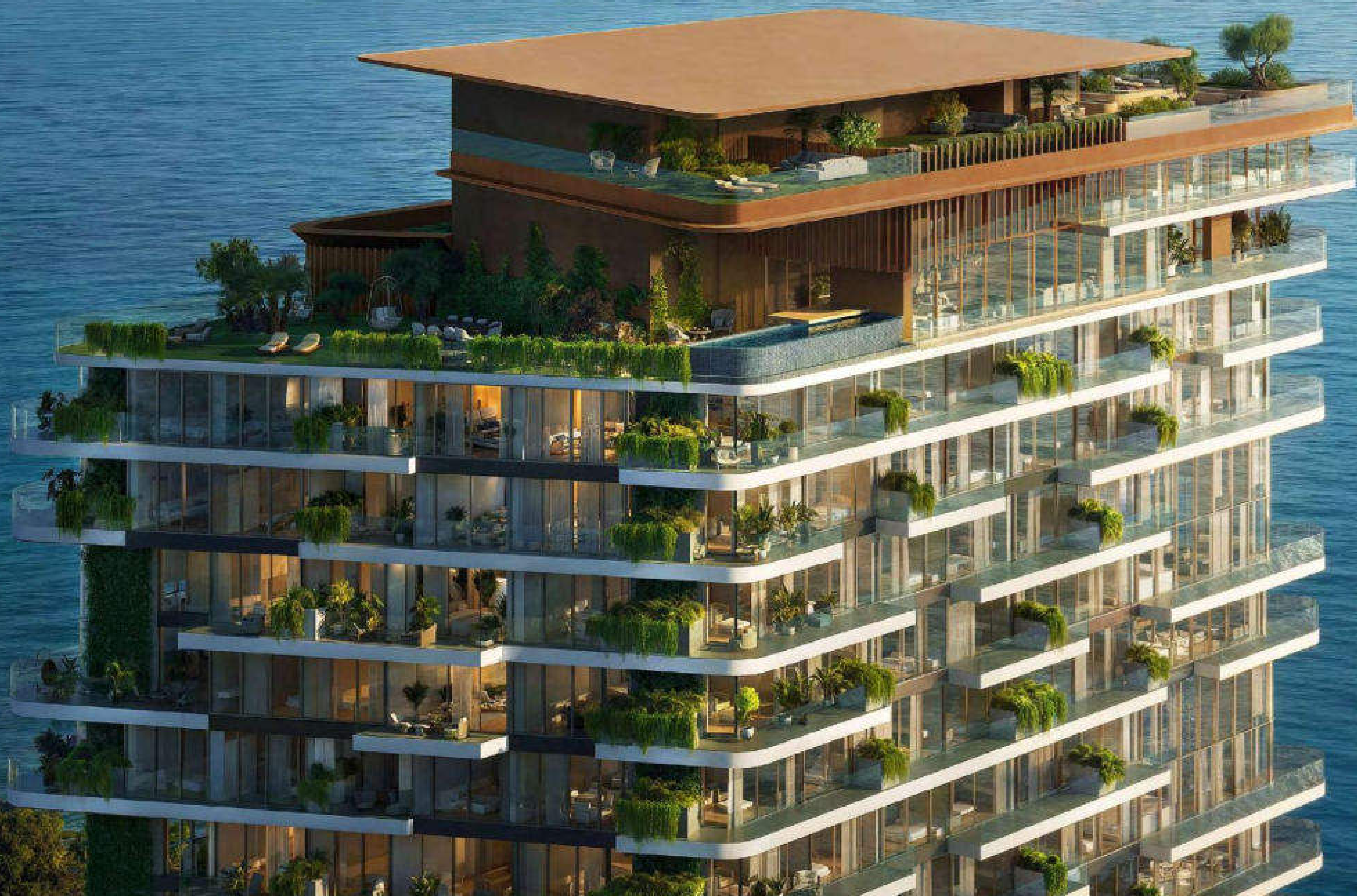
Spanning three impeccably designed levels, these residences balance privacy, elegance, and social connection in perfect harmony.

Each bedroom is a sanctuary with its own private en-suite, while the open-plan living areas integrate kitchen, lounge, and dining spaces into one fluid environment—ideal for both intimate moments and lively gatherings.

The Chalet's rooftop level unveils a private pool and lounge terrace, where panoramic views set the stage for unforgettable sunsets, relaxation, and refined entertaining with family and friends.

THE PINNACLE OF COMFORT AND LEISURE

PENTHOUSES



PENTHOUSES DESIGNED FOR LIFE AT ITS FINEST

*Soulever's Penthouses embody the
pinnacle of elevated living, with
expansive bedrooms and open-plan
interiors designed to blend comfort
and sophistication.*

An outdoor kitchen extends
the living experience, creating
seamless opportunities for
dining and entertaining under
the open sky.

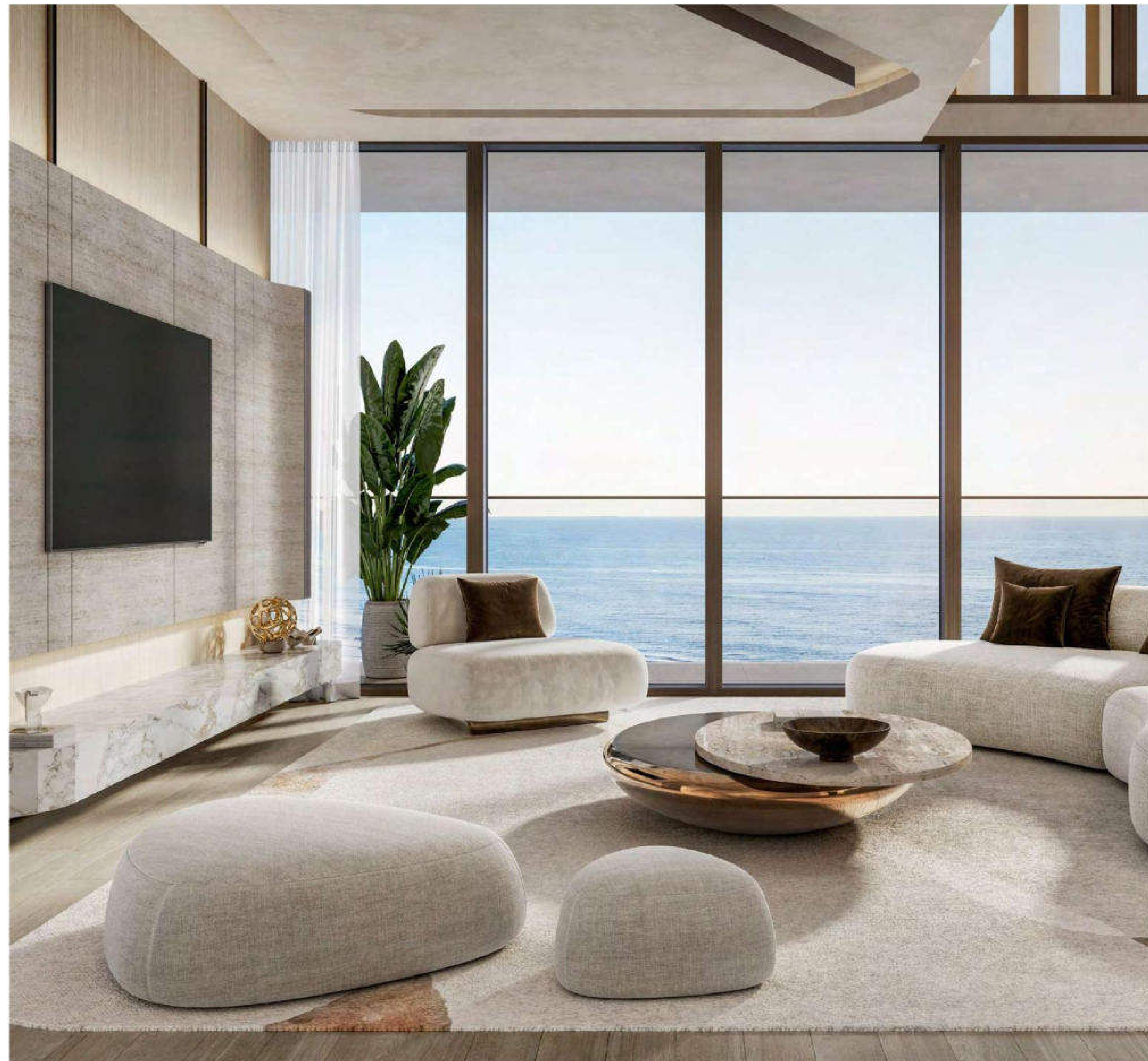


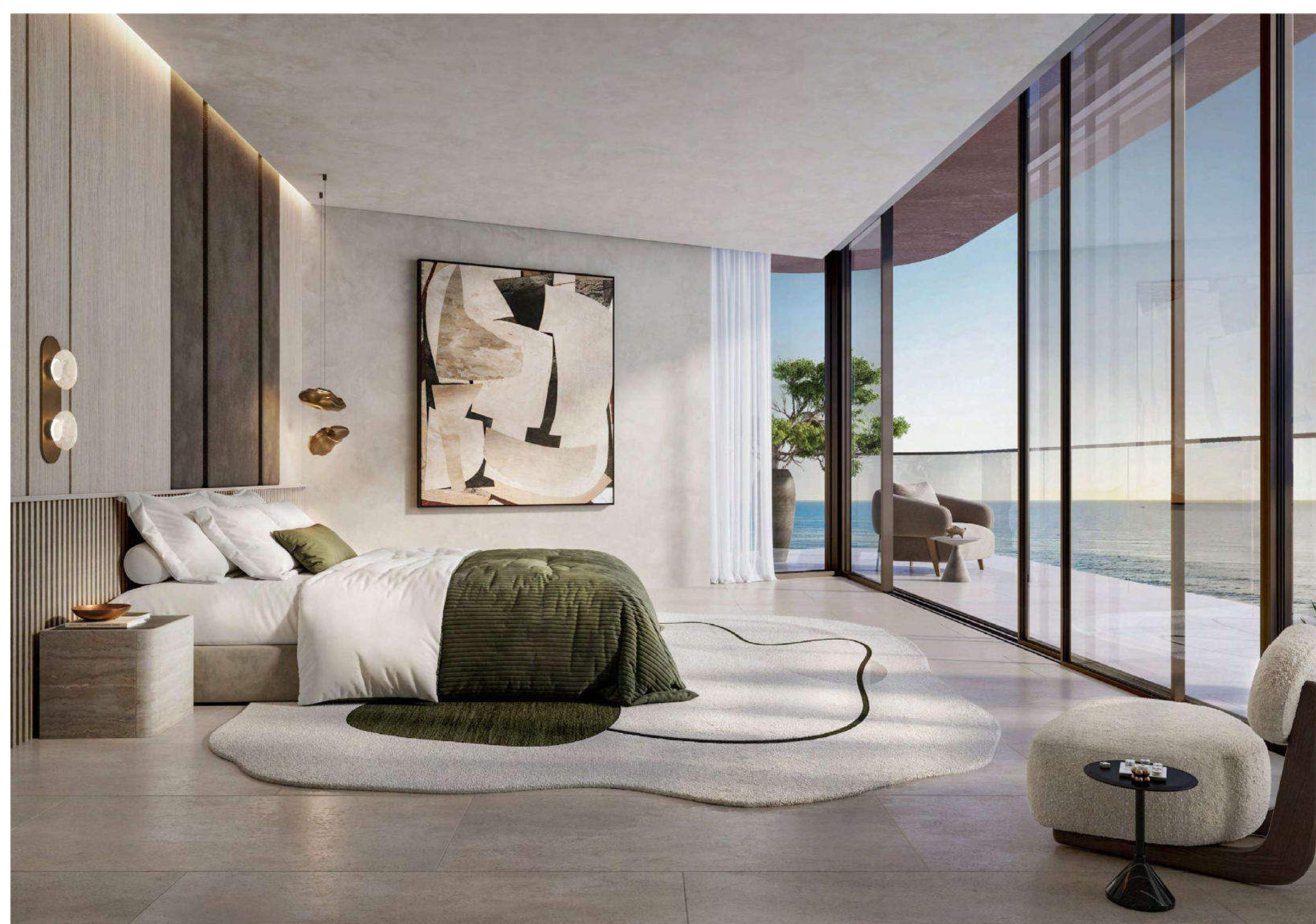


WHERE LEISURE FINDS ITS HEIGHT

Here, serene relaxation meets refined social gatherings—an ideal setting for moments that are as unforgettable as the views themselves.

On the upper level, dedicated entertainment lounges flow onto private roof gardens and panoramic balconies, framing sweeping sea and city vistas.







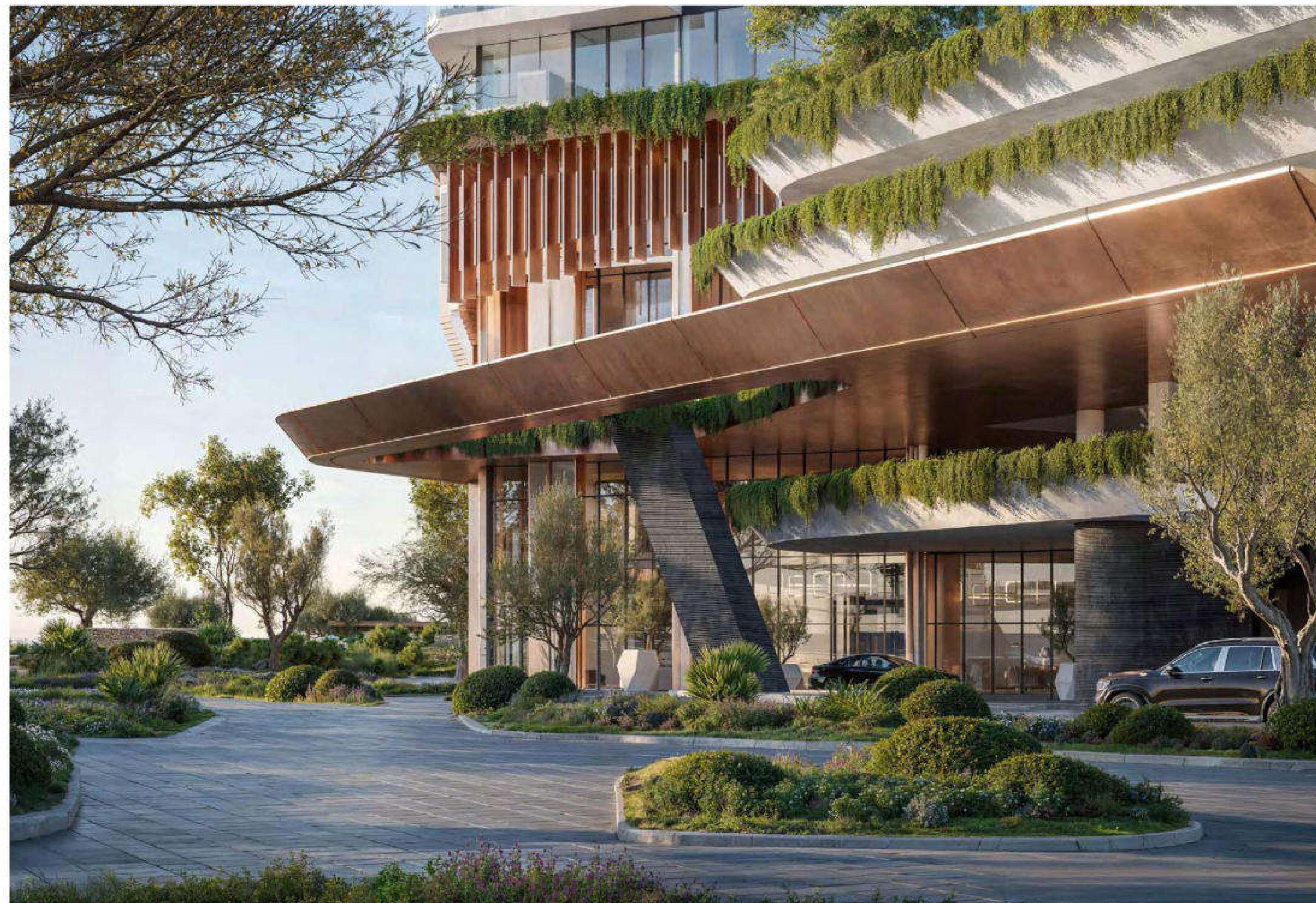
4. Amenities

FIRST IMPRESSIONS, PERFECTED

ARRIVAL EXPERIENCE

*From the moment you
arrive, a sense of calm
and sophistication
surrounds you.*

Landscaped walkways guide you seamlessly
toward the entrance, where light, water, and
greenery come together in perfect harmony.
The architecture frames your first impression
with quiet grandeur, offering a preview of the
lifestyle that awaits within.

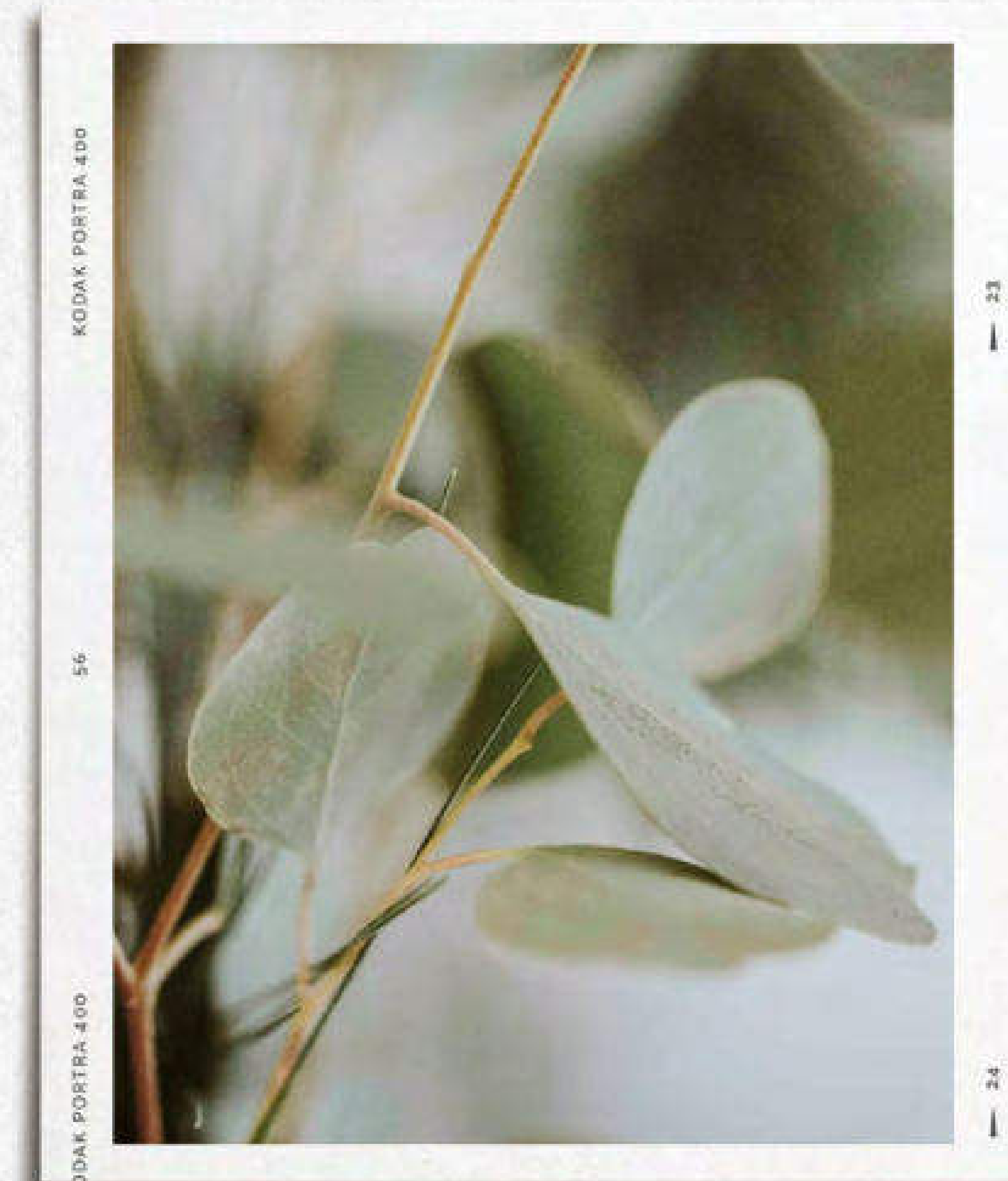
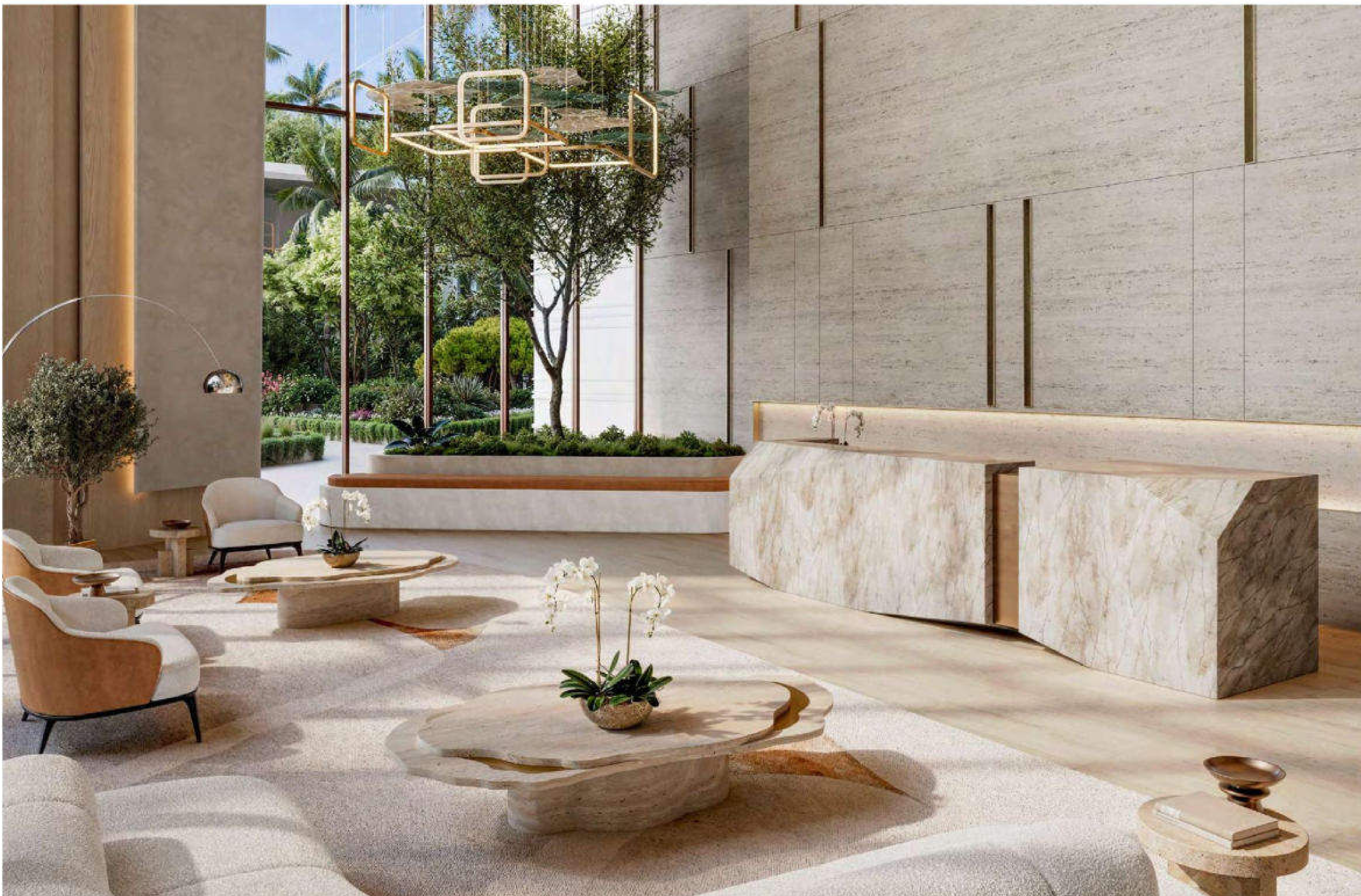


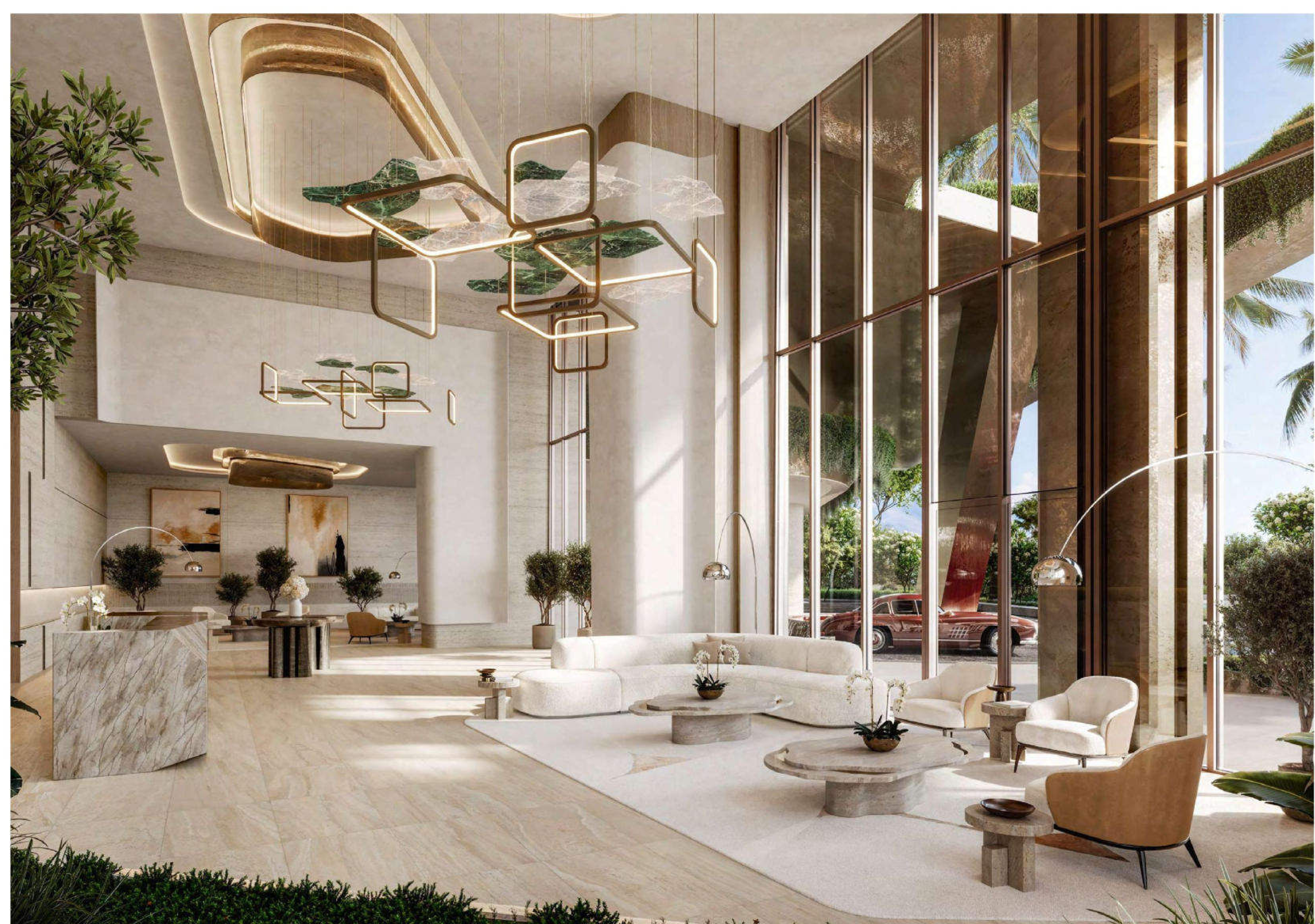


THE POETRY OF ARRIVAL

*Inside, the lobby
embodies understated
luxury.*

Natural light filters through expansive glass, highlighting elegant finishes and bespoke furnishings. The lobby is designed to be both functional and inspiring, an environment that sets the tone for the residences above while offering residents a warm and effortless welcome every day.





CURATED SPACES FOR LIVING, WELLNESS, AND CONNECTION

AMENITIES

*Amenities Crafted for
Comfort and Balance.*

Dining, wellness, and fitness amenities at Soulever have been thoughtfully curated, combining comfort, balance, and style with spaces designed for family life and meaningful social connections.



*A castle just for us, like the
ones we turn out in the sand.*



WHERE STORIES COME ALIVE

*A dedicated cinema
brings the magic of the
big screen home.*

AMENITIES

Designed with plush seating, state-of-the-art sound, and a curated ambiance, it transforms movie nights into immersive experiences—whether for family, friends, or a private escape.



FOR READING, REFLECTION, AND ESCAPE

AMENITIES

*The library is a
retreat of stillness
and inspiration.*

Shelves lined with curated works and comfortable
nooks invite residents to read, reflect, or work in peace.
More than a collection of books, it is a space to slow
down, disconnect, and immerse yourself in ideas.

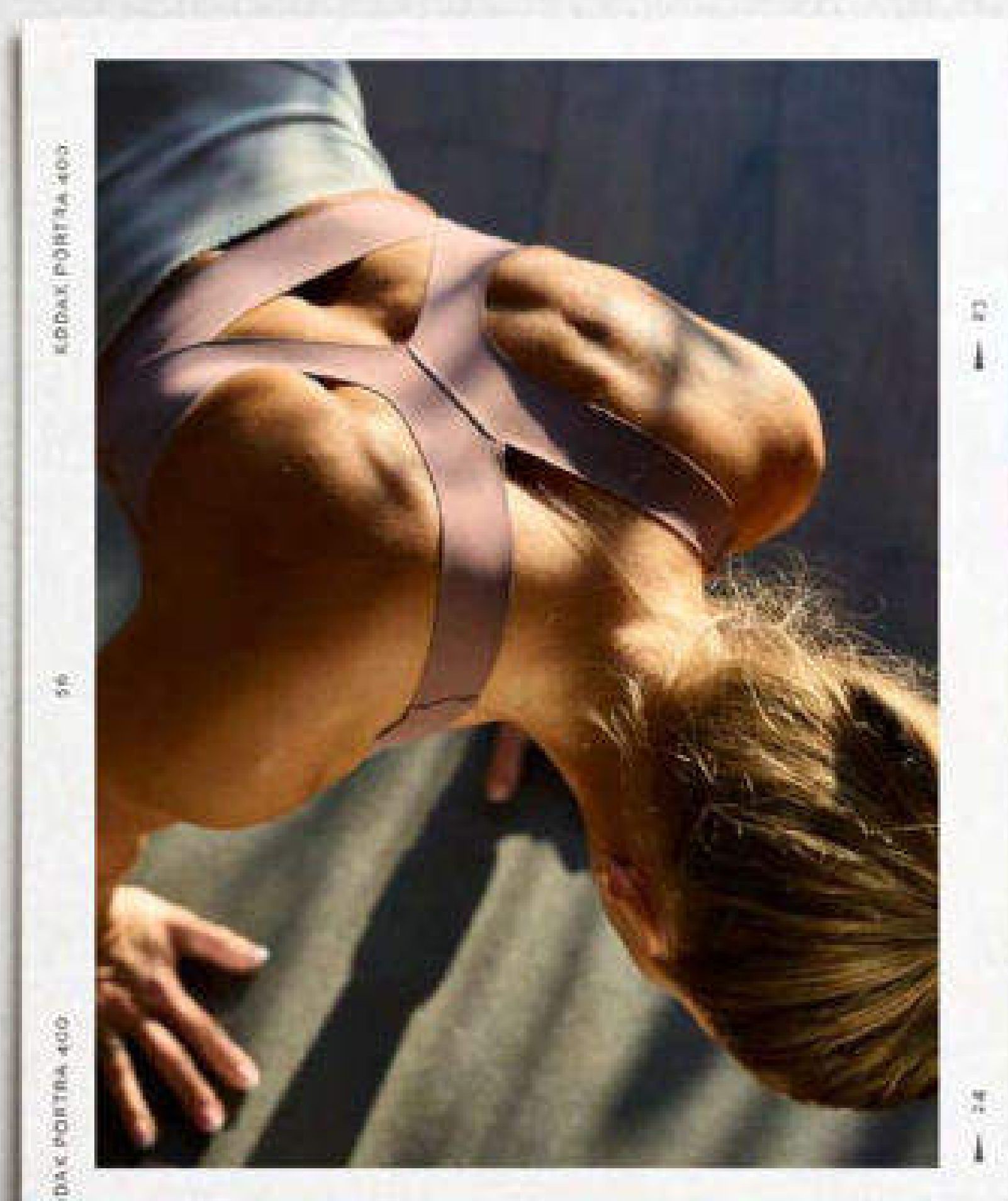


AMENITIES

DESIGNED FOR RENEWAL

*Wellness has been
re-imagined
as a sanctuary of calm,
renewal, and connection.*

Designed to restore balance to body and mind, it offers serene treatment rooms, calming aromas, and a tranquil atmosphere that invites you to slow down. From tailored therapies to spaces for quiet reflection, every detail nurtures a sense of wellbeing and harmony.





AMENITIES

A COMPLETE APPROACH TO FITNESS

*Within Soulever, fitness becomes an
inspiring part of daily life.*

From the energy of the state-of-the-art gym floor to the mindful flow of outdoor yoga, every space is designed to elevate both body and spirit. A yoga studio adds balance, variety, and enjoyment to your wellness journey.





POOLS, VIEWS, AND MOMENTS TO CHERISH

*Unwind at the podium-level
wet area and heated pool,
enjoying panoramic views in a
serene setting.*

For social and family moments, stroll
through the podium park, savor a
refreshing drink at the pool bar, or
create cherished memories at the
children's pool.

*now we are not just us,
but beautifully three.*



AMENITIES

A COMPLETE APPROACH TO FITNESS

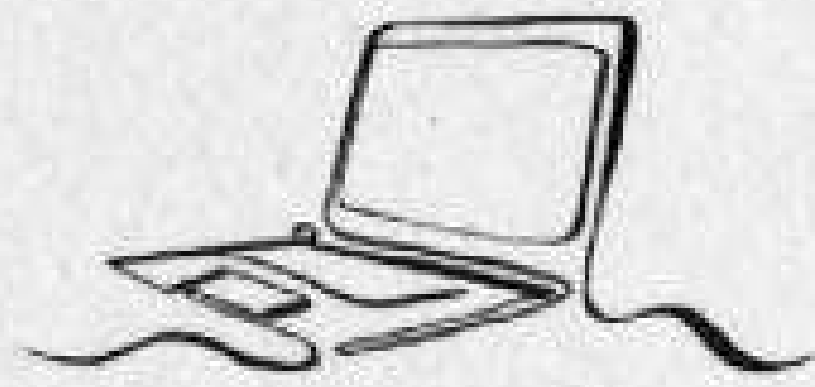
*Within Soulever, fitness becomes an
inspiring part of daily life.*

From the energy of the state-of-the-art gym floor to the mindful flow of outdoor yoga, every space is designed to elevate both body and spirit. A yoga studio adds balance, variety, and enjoyment to your wellness journey.

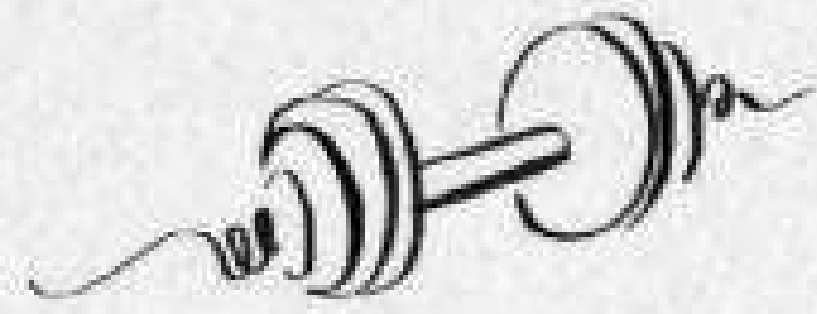


AMENITIES

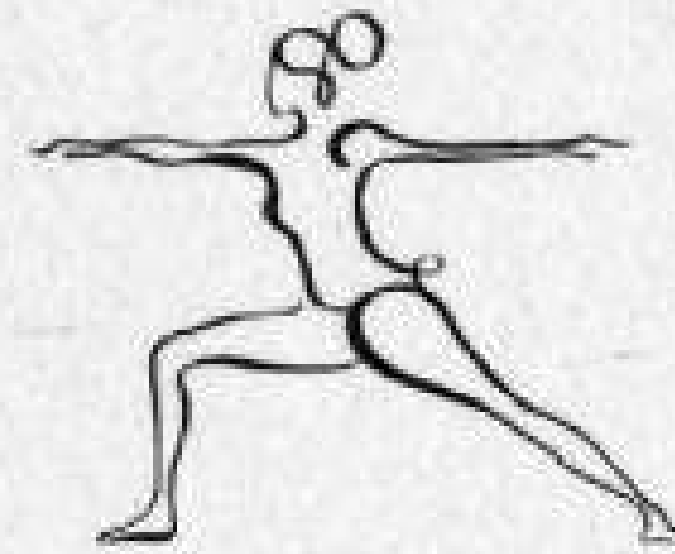
BEYOND THE EXPECTED



Residents lounge



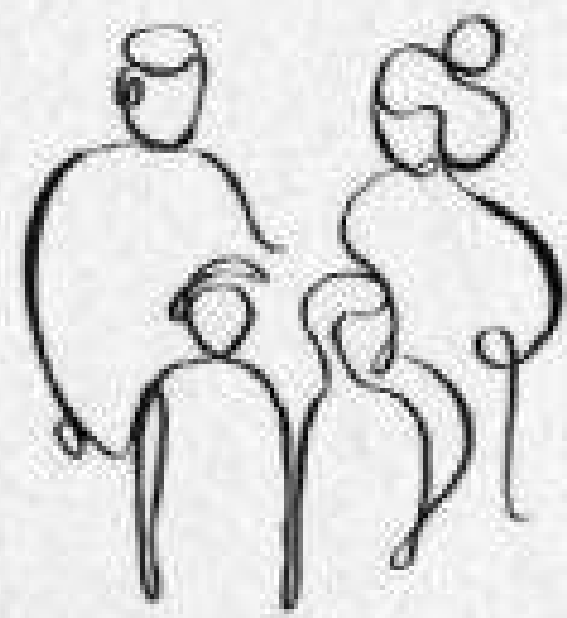
Gym



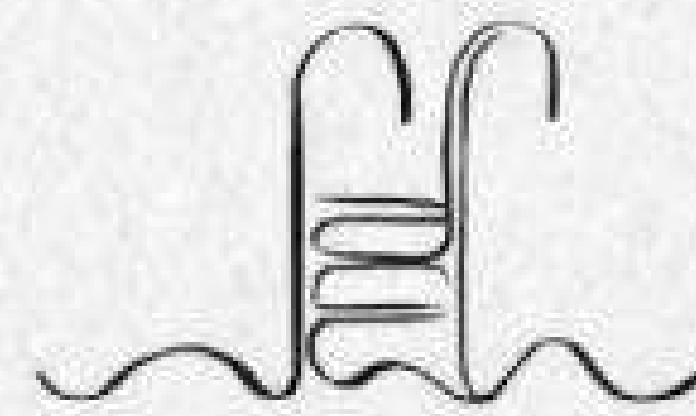
Outdoor Yoga



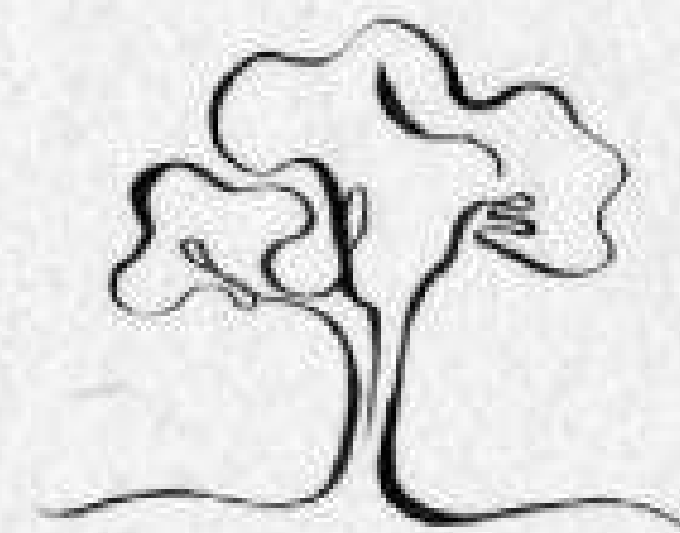
*Exercise
Park*



*Family
Area*



*Swimming
Pool*



*Podium
Park*

*The variety of amenities at
Soulever is thoughtfully curated to
enrich every aspect of daily life.*

At the podium level, residents can enjoy the expansive landscaped curated spaces, outdoor exercise spaces, and serene seating areas for moments of relaxation.

For those who see Soulever balance between work and home, Soulever also offers a dedicated residents lounge designed to inspire productivity within a sociable and holistic setting.

SOULEVER

IHR DEUTSCHER IMMOBILIENMARKLER INKLUSIVE RECHTSBERATUNG IN DUBAI



Für ein Beratungsgespräch buchen Sie sich jetzt Ihren Termin:
KOSTENLOSES ERSTGESPRÄCH



CANALETTO SKY
REAL ESTATE

Hier geht's zu unserer Webseite:
CANALETTO SKY REAL ESTATE LLC

dubai@canalettosky.com

+971 56 589 1112