

OXFORD  
COVE  
*by* IMAN

IMAN  
DEVELOPERS

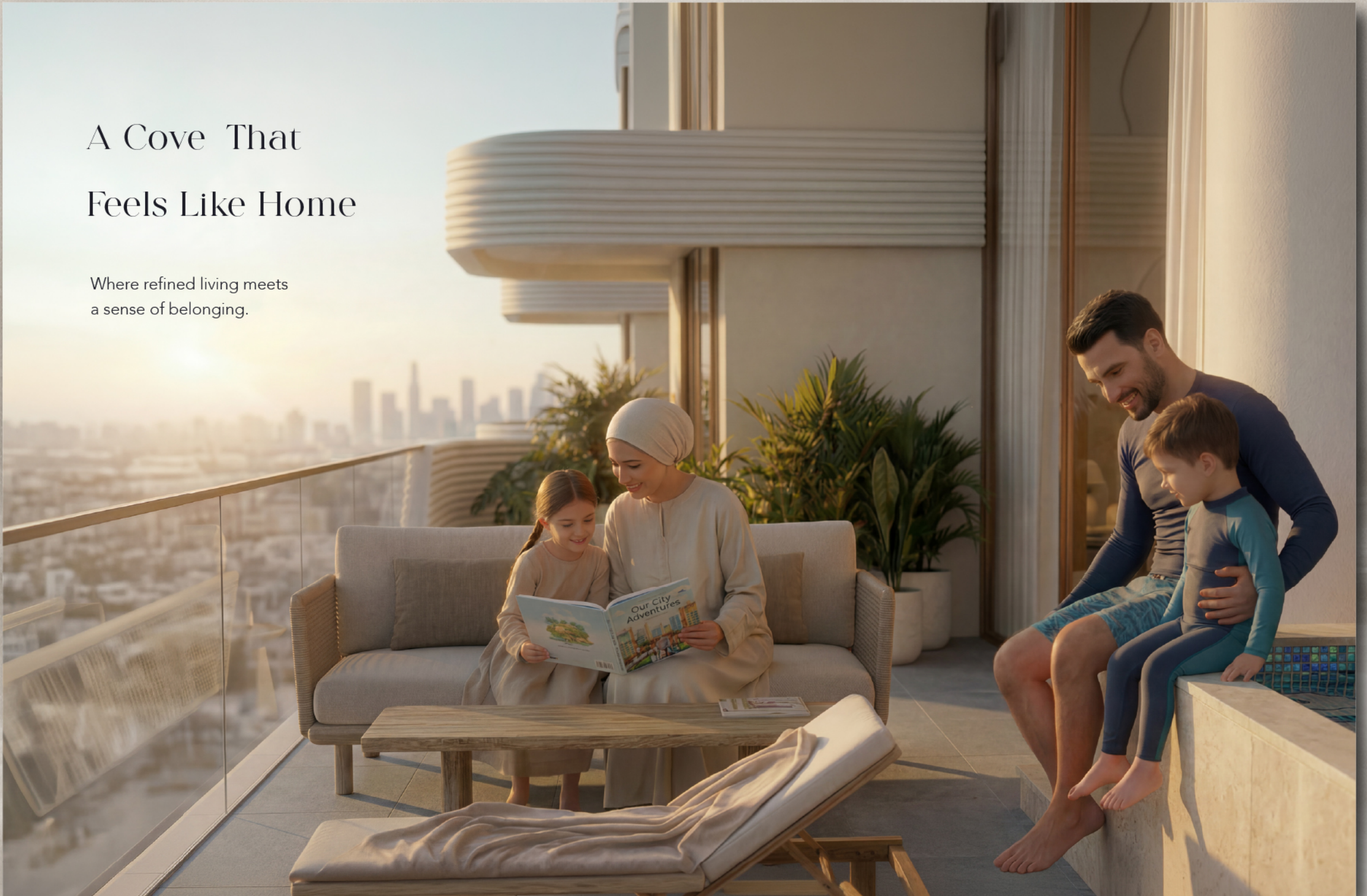


# Nature Shaped Luxury

Flowing architectural curves inspired by nature

# A Cove That Feels Like Home

Where refined living meets  
a sense of belonging.



**01** **2016**  
OXFORD VILLAS

**02** **2017**  
OXFORD RESIDENCES

**03** **2019**  
OXFORD RESIDENCES 2

**04** **2021**  
OXFORD BOULEVARD

**05** **2022**  
OXFORD 212

**06** **2022**  
OXFORD TERRACES

**07** **2022**  
OXFORD TERRACES 2

**08** **2022**  
THE GROVE

**09** **2023**  
OXFORD GARDENS

**10** **2023**  
10 OXFORD

**11** **2023**  
GARDENS 2

**12** **2024**  
ONE PARK CENTRAL

**13** **2024**  
ONE SKY PARK

**14** **2024**  
ONE PARK SQUARE

**15** **2025**  
15 CASCADE

**16** **2025**  
SIERRA

Iman Developers  
Crafting timeless  
spaces  
Since 2016



## JVC: The Urban Sanctuary

Jumeirah Village Circle (JVC) offers a refined balance of community living and modern convenience, positioning it as one of Dubai's most desirable residential neighborhoods. Surrounded by landscaped parks, reputable schools, and leading medical facilities, JVC provides all the essentials for a balanced and elevated lifestyle. Its strategic proximity to major motorways ensures smooth connectivity across the city.

Evolving into a well-established destination, JVC combines contemporary infrastructure with a welcoming, family-oriented environment. For discerning homebuyers, this vibrant community presents an ideal choice — offering a strong sense of belonging alongside a premium investment opportunity within Dubai's dynamic real estate landscape.

# A Sheltered Cove in the Heart of the City

**17**min

Bluewaters  
Island

**18**min

Expo  
City

**20**min

Palm  
Jumeirah

**20**min

Mall of the  
Emirates

**25**min

Dubai  
Mall

**30**min

Al Maktoum  
Intl Airport

**30**min

Dubai Intl  
Airport  
(DXB)

**36**min

Palm  
Jebel Ali

OXFORD  
COVE  
by IMAN

# A Connected Community in JVC

Set within Jumeirah Village Circle, Oxford Cove is part of a well-established district defined by balance, accessibility, and everyday ease.

JVC brings together parks, Circle Mall, schools, hotels, and essential retail, all within close reach. Direct connections via Al Khail Road and Hessa Street ensure seamless access across the city.

Within this wider fabric, multiple developments by Iman Developers contribute to the evolving residential character of the community.

Oxford Cove sits within this connected setting — offering the calm of a familiar neighborhood with the advantage of city-wide connectivity.



# The Oxford Series

A legacy shaped through design



OXFORD VILLAS



OXFORD RESIDENCES



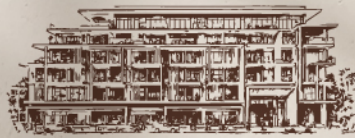
OXFORD RESIDENCES 2



OXFORD BOULEVARD



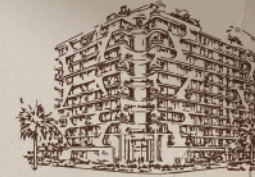
OXFORD 212



OXFORD TERRACES



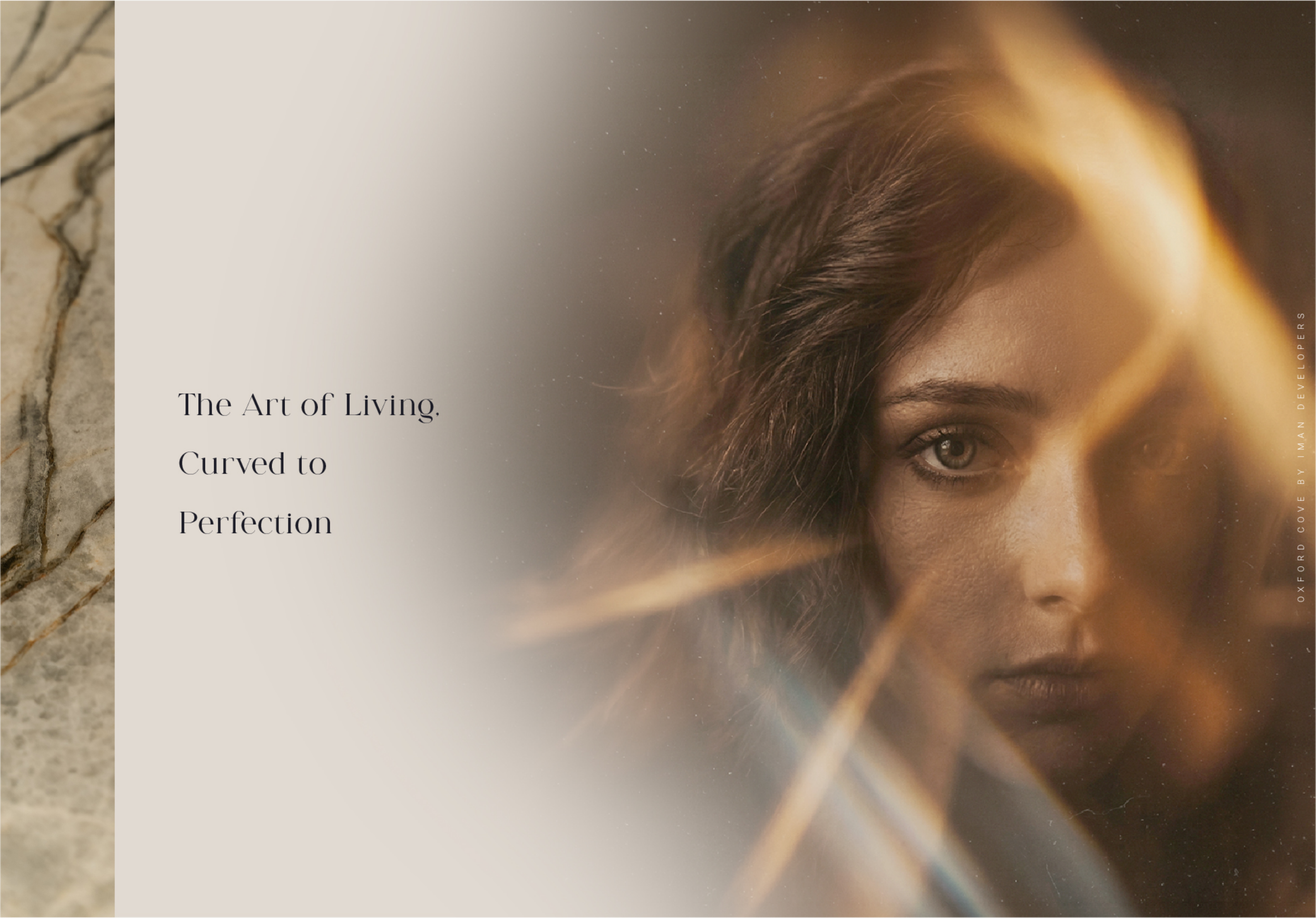
OXFORD TERRACES 2



OXFORD GARDENS



10 OXFORD



The Art of Living.  
Curved to  
Perfection



# Building Configuration

## Units Breakdown

247  
Residential  
Apartment

06  
Retail

## Number of Floors

B + G + P + 5

## Completion Date

Q1 2029



### **5th Floor**

30M Infinity Pool, BBQ Area,  
Fitness Center, Meditation Deck,  
Outdoor Activity Area, Jacuzzi, Leisure Deck

### **4th floor**

Corner Duplex with Plunge Pool

### **1st Floor**

38M Leisure Pool, Kid's Pool,  
Splash Pad, Outdoor Kid's Play Area,  
Pool Deck Seating, Outdoor Dining

### **Podium**

Clubhouse,  
Indoor Kid's Play Area

### **Ground Floor**

Double Height Entrance Lobby,  
Retail Units, Ev-Parking, Parking Entrance & Exit

# Residential Collection

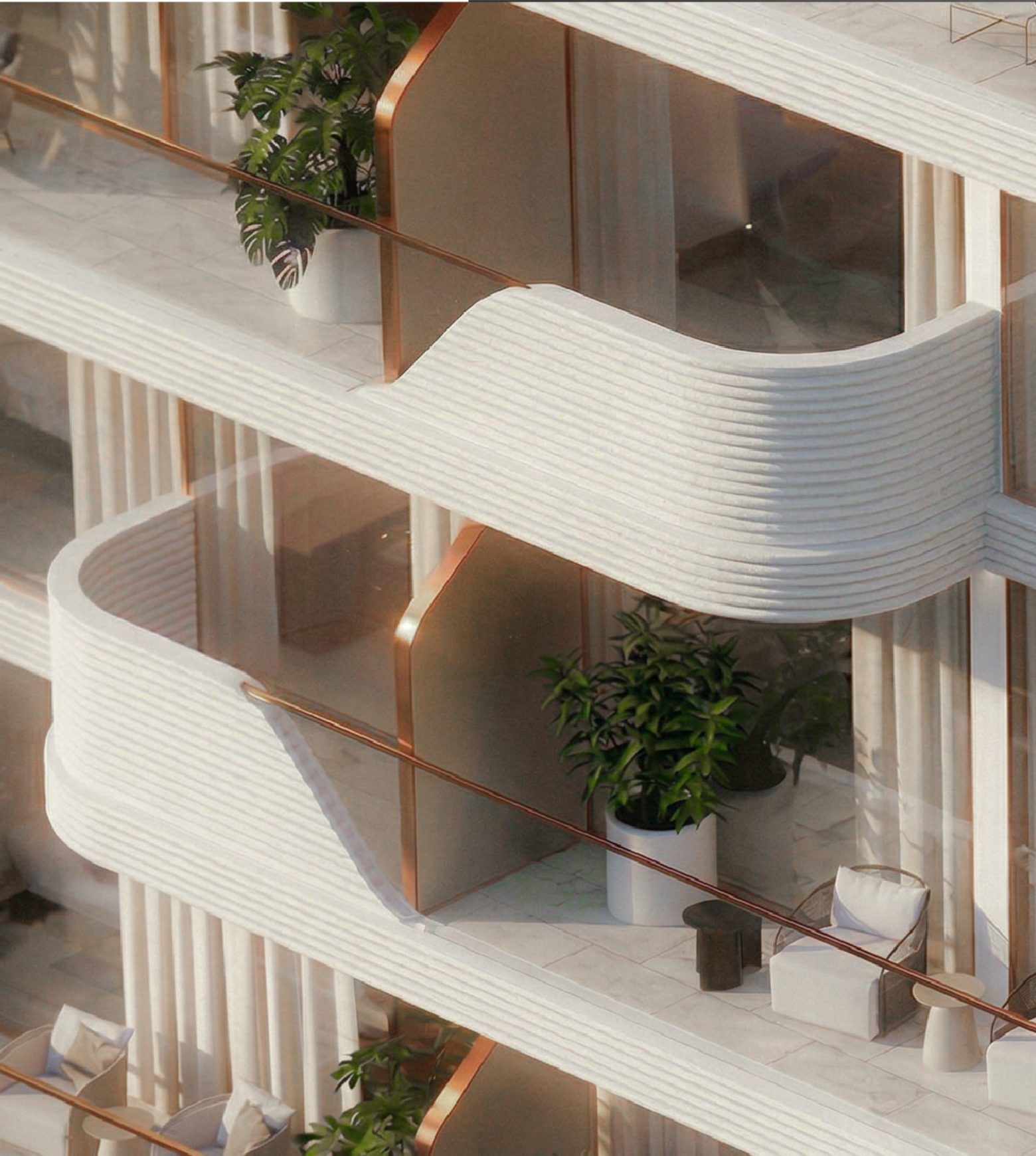
## Number of Units

Retail	:	6 Units
Studio	:	109 Units
1 Bedroom	:	68 Units
1 Bed with Study	:	30 Units
2 Bedroom	:	21 Units
2 Bed with Study	:	15 Units
2 Bed Duplex with Pool	:	4 Units

## Starting Unit Sizes

Retail	:	From 680 Sq.ft
Studio	:	From 388 Sq.ft
1 Bedroom	:	From 658 Sq.ft
1 Bed with Study	:	From 741 Sq.ft
2 Bedroom	:	From 1061 Sq.ft
2 Bed with Study	:	From 1041 Sq.ft
2 Bed Duplex with Pool	:	From 2159 Sq.ft





## Exceptional Amenities



38M LEISURE POOL



KIDS POOL



KID'S SPLASH PAD



OUTDOOR KID'S  
PLAY AREA



INDOOR KID'S  
PLAY AREA



OUTDOOR  
DINING AREA



LEISURE SEATING



CLUBHOUSE



FITNESS  
CENTER



MEDITATION DECK



OUTDOOR  
ACTIVITY AREA



BBQ LOUNGE



JACUZZI



30M ROOFTOP  
INFINITY POOL



OXFORD COVER BY ILMAN DEVELOPERS



NEIGHBOUR

ROAD

PASSAGE

ROAD

OXFORD COVE BY IMAN DEVELOPERS

# Ground Floor Amenities

- 1. Double Height Main Lobby
- 2. Lounge Seating Area
- 3. Meeting Zone
- 4. Carpool Vehicle Parking
- 5. Bicycle Parking
- 6. Retail Spaces
- 7. POD Parking



NEIGHBOUR

ROAD

PASSAGE

ROAD

OXFORD COVE BY IMAN DEVELOPERS

# P-Floor Amenities

- |                                     |                              |                           |                       |                  |
|-------------------------------------|------------------------------|---------------------------|-----------------------|------------------|
| 8. POD Parking                      | 12. TV lounge                | 17. Games Lounge          | 22. Basketball Zone   | 27. Hanging Pods |
| 9. Hybrid Vehicle                   | 13. Social Relaxation Lounge | 18. Entertainment Arcade  | 23. Climbing Wall     | 28. Puzzle Wall  |
| 10. Low Emitting<br>Vehicle Parking | 14. Hot Desk Seating Zone    | 19. Indoor Kids Play Area | 24. Soft Seating Area |                  |
| 11. Clubhouse                       | 15. Refreshment Zone         | 20. Adventure Slide       | 25. Creative Hub      |                  |
|                                     | 16. Quiet / Reading zone     | 21. Ball Pit Landing      | 26. Kitchenette       |                  |



NEIGHBOUR

ROAD

PASSAGE

ROAD

# First Floor Amenities

- 29. 38M Leisure Pool
- 30. Kids Pool
- 31. Splash Pad
- 32. Outdoor Kids Play Area
- 33. Outdoor Seating
- 34. Sun Loungers
- 35. Outdoor Shower
- 36. Outdoor Dining
- 37. Pool Deck
- 38. Walkway



NEIGHBOUR

ROAD

PASSAGE


ROAD

OXFORD COVE BY IMAN DEVELOPERS

# Rooftop Floor Amenities

- |                               |  |                                    |                         |
|-------------------------------|--|------------------------------------|-------------------------|
| 39. 30M Rooftop Infinity Pool | 44. Barbeque Area                            | 49. People of Determination Toilet | 54. Free Weights Studio |
| 40. Jacuzzi                   | 45. Outdoor Chess                            | 50. Strength Zone                  | 55. Recovery Zone       |
| 41. Sun Loungers              | 46. Meditation Deck                          | 51. Functional Training Track      |                         |
| 42. Reading Zone              | 47. Fintess Center                           | 52. Cardio Deck                    |                         |
| 43. Outdoor Seating           | 48. Male/Female Changing Rooms & Shower Area | 53. Endurance Hub                  |                         |





Where  
Every Moment  
Finds Its Sanctuary



COFFEE SHOP

MI IMAN

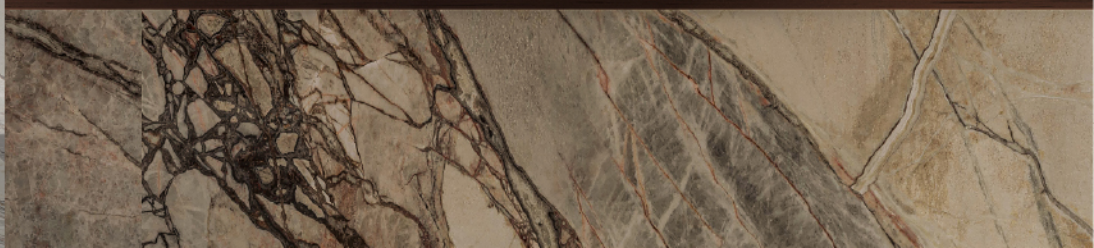
Grand Drive

ELCOPERS  
NEW  
OCCUPANCY



*Double Height Entrance Lobby*

A Calm Beginning  
to every arrival





*Double Height Entrance Lobby*



Where life  
Finds its  
Natural rhythm

At Oxford Cove, amenities are shaped as an extension of everyday living — open, calm, and intuitively placed to support moments of rest, movement, and connection.



OXFORD COVE BY IMAN DEVELOPERS

*38M Leisure Pool*



*Kids Pool*

OXFORD CONVEYANCE BY HUMAN DEVELOPERS



OXFORD COVE BY IMAN DEVELOPERS

*Outdoor Kids Play Area*



*Indoor Kids Play Area*



OXFORD COVE BY IMAN DEVELOPMENT



*Fitness Center*

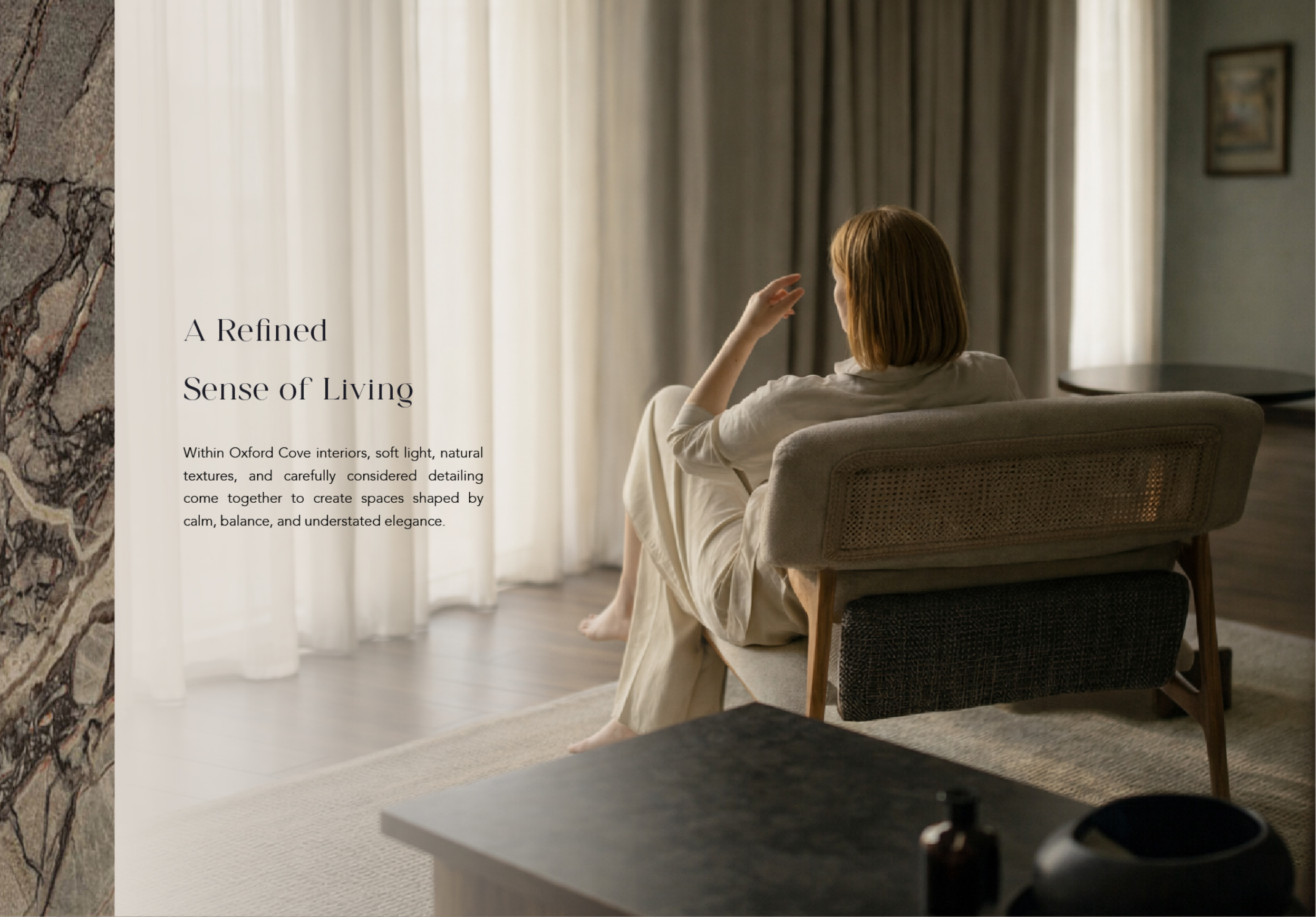


*BBQ Area*



*30M Rooftop Infinity Pool*

PHOTO COURTESY MAN DEE ELPERS

A woman with short blonde hair is sitting in a light-colored armchair with a cane backrest, viewed from behind. She is wearing a light-colored, long-sleeved top and trousers. Her right hand is raised towards a window with sheer white curtains. The room is softly lit, with a dark coffee table in the foreground and a round side table visible in the background. The overall atmosphere is calm and elegant.

## A Refined Sense of Living

Within Oxford Cove interiors, soft light, natural textures, and carefully considered detailing come together to create spaces shaped by calm, balance, and understated elegance.

A Space  
That Feels  
Like Home


Ease and comfort come together in this living area — where natural light, soft finishes, and a sense of openness create a place you'll always want to return to.



ELIZABETH HILLERSS  
OXFORD



The Living Room



Where  
Life Unfolds  
Naturally

Thoughtfully arranged, the kitchen and dining space support both daily routines and shared moments — feeling welcoming, intuitive, and effortlessly connected.



The Dining Area

OXFORD COVE BY MAN DEVELOPERS



The Kitchen



A Space  
to Rest  
and Unwind

Soft tones, natural light, and a sense of calm  
come together to create a bedroom that feels  
peaceful, comfortable, and effortlessly inviting



The Bedroom



# Where Comfort Feels Effortless

Crafted with thoughtful design and refined finishes, the bathroom offers a serene atmosphere that transforms everyday routines into moments of comfort and relaxation.





The Bathroom

# OXFORD COVE

by IMAN

## Typical Unit Plans

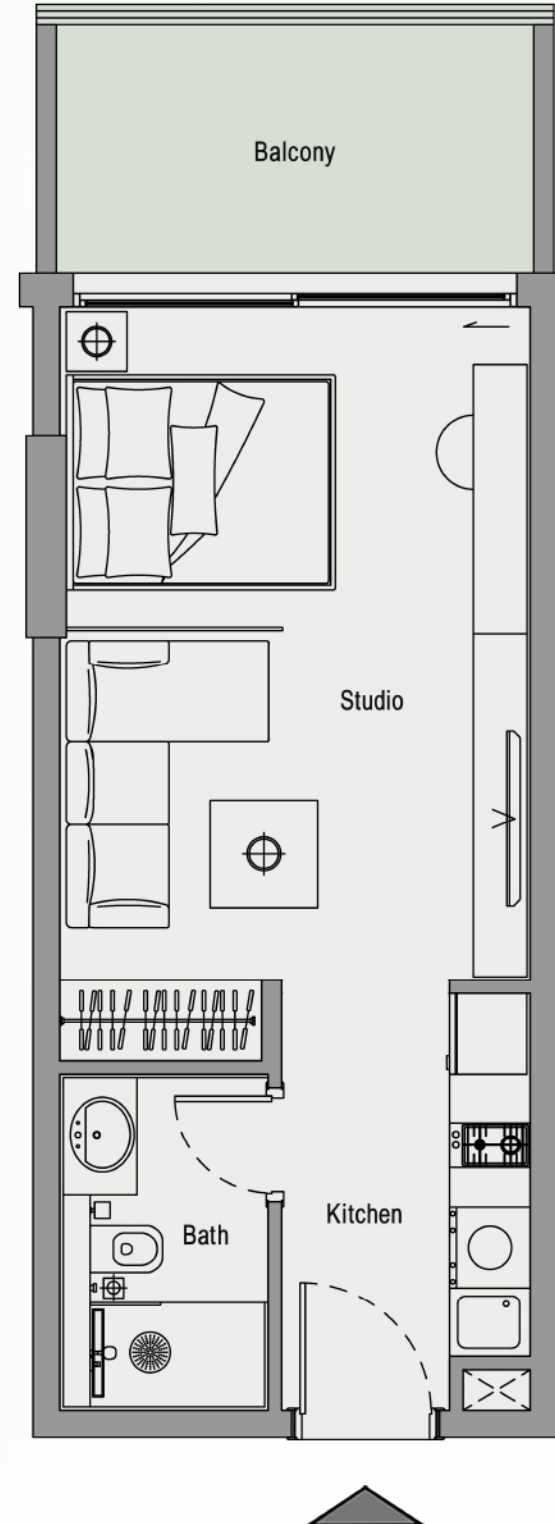


# Studio

SUITE AREA 330 SQFT

BALCONY AREA 84 SQFT

TOTAL AREA 414 SQFT

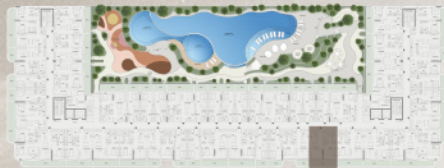
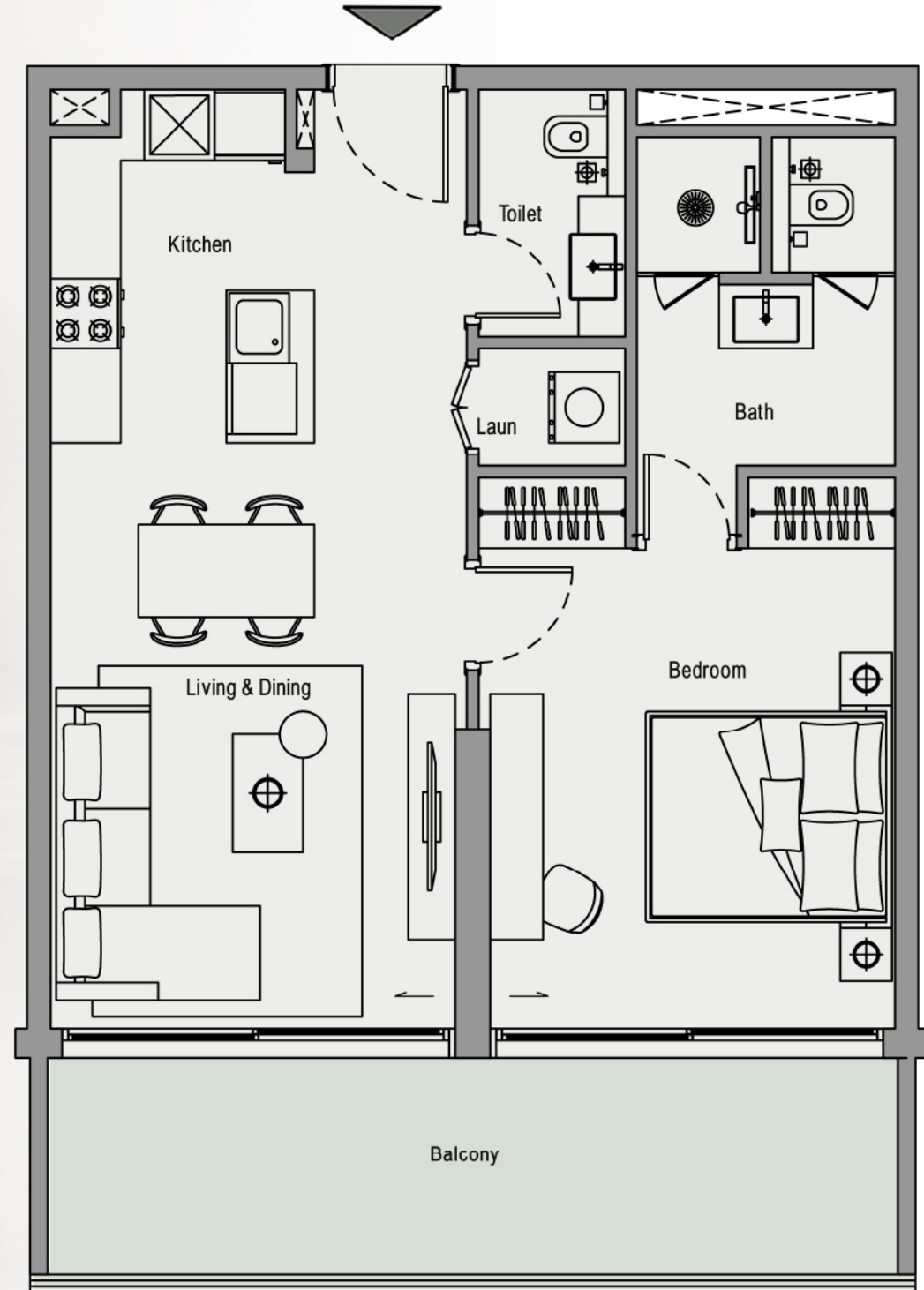


# 1 Bedroom

SUITE AREA 635 SQFT

BALCONY AREA 169 SQFT

TOTAL AREA 804 SQFT



# 1 Bed with Study

SUITE AREA	659 SQFT
BALCONY AREA	82 SQFT
TOTAL AREA	741 SQFT



Disclaimer: all pictures, plans, layouts information, data and details included in this brochure are indicative only and may change at any time up to the final 'as built status in accordance with the final designs of the project, regulatory approvals and planning permissions'

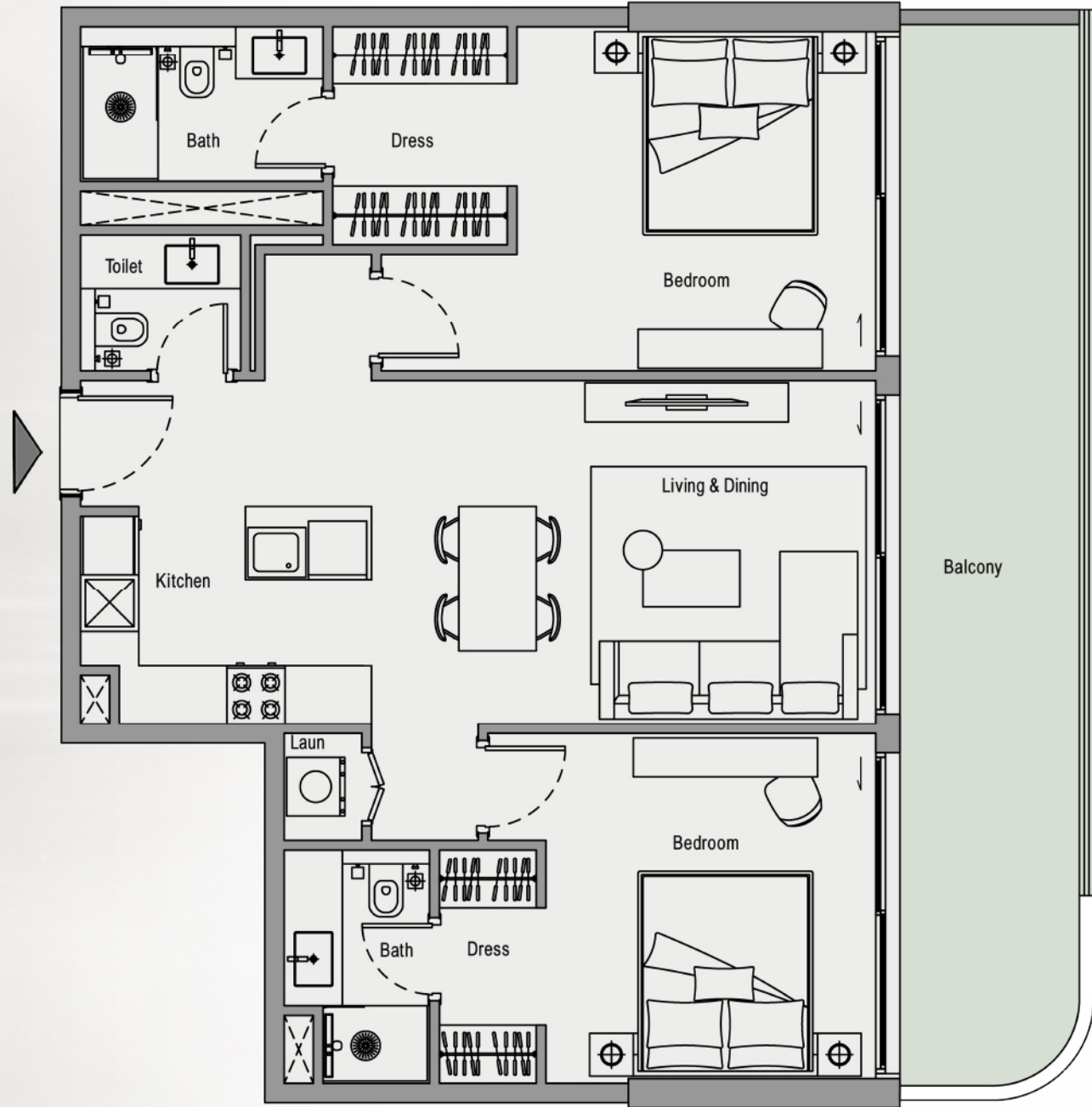


# 2 Bedroom

SUITE AREA 895 SQFT

BALCONY AREA 251 SQFT

TOTAL AREA 1146 SQFT



# 2 Bed with Study

SUITE AREA	972 SQFT
BALCONY AREA	245 SQFT
TOTAL AREA	1217 SQFT



Disclaimer: all pictures, plans, layouts information, data and details included in this brochure are indicative only and may change at any time up to the final 'as built status in accordance with the final designs of the project, regulatory approvals and planning permissions'

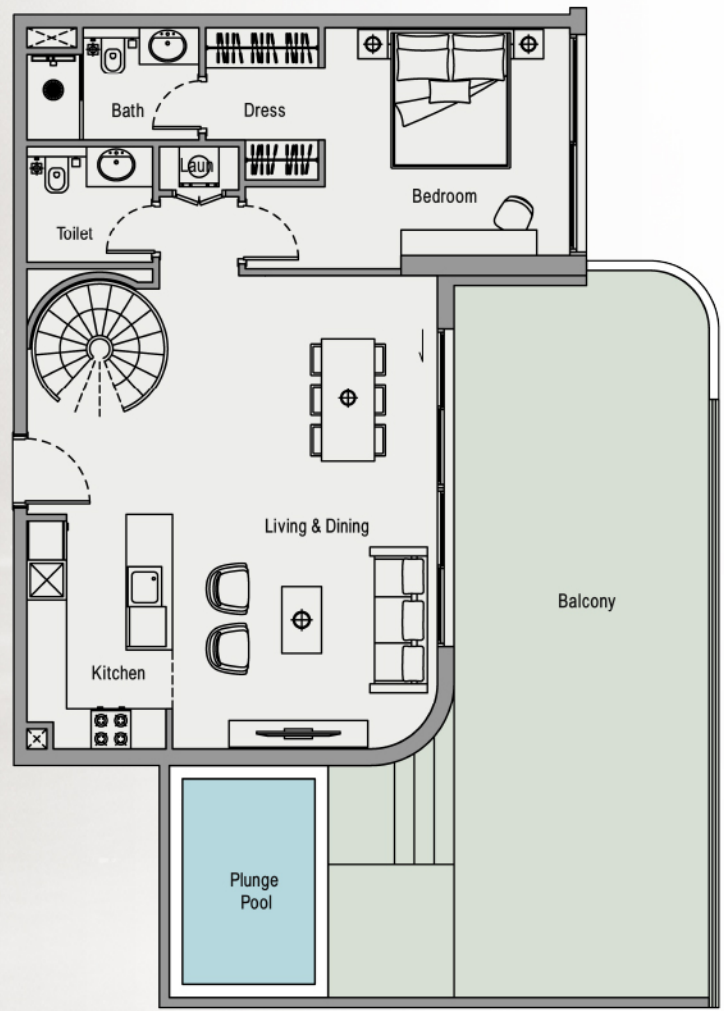


# 2 Bed Duplex with Pool

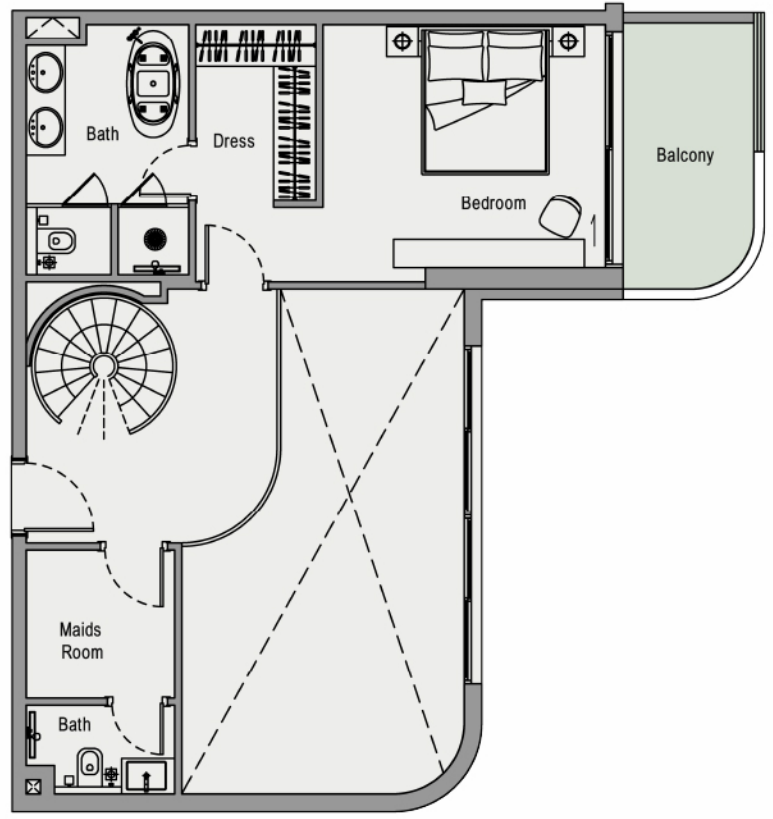
SUITE AREA	1411 SQFT
BALCONY AREA	748 SQFT
TOTAL AREA	2159 SQFT



LOWER FLOOR



UPPER FLOOR



Disclaimer: all pictures, plans, layouts information, data and details included in this brochure are indicative only and may change at any time up to the final 'as built status in accordance with the final designs of the project, regulatory approvals and planning permissions'

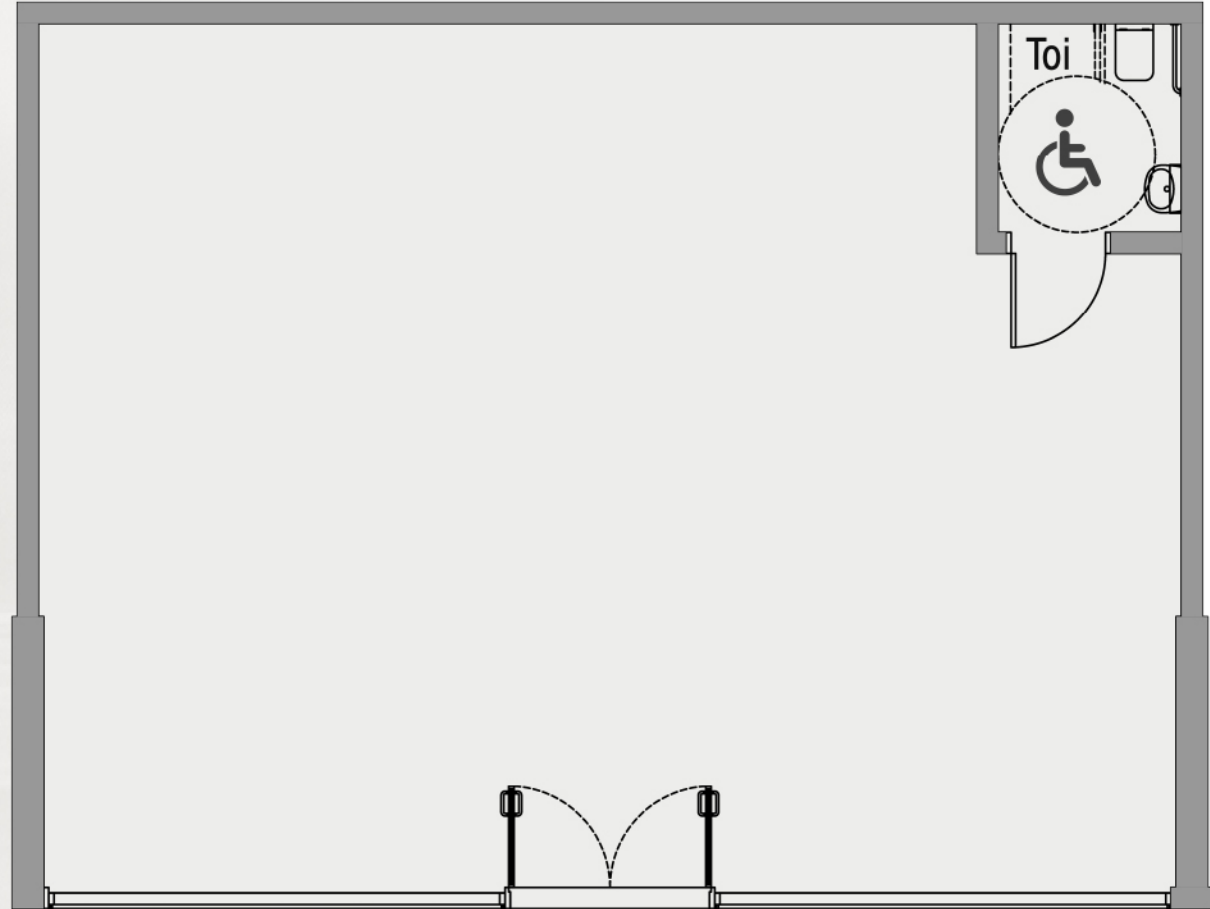


# Retail

SUITE AREA            1019 SQFT

---

TOTAL AREA            1019 SQFT





## STARTING PRICE

679K

Studio

1.11M

1 Bedroom

1.15M

1 Bed with Study

1.45M

2 Bedroom

1.69M

2 Bed with Study

2.24M

2 Bed Duplex with Pool

2.1M

Retail Units

## PAYMENT PLAN

20%

On Booking

10%

In 90 days

10%

On 20% Construction  
Completion

10%

On 40% Construction  
Completion

50%

On Project  
Completion

RESIDENTIAL  
PRE-LAUNCH OFFER

4%

Discount

PAYMENT PLAN

40%

During Construction

60%

On Completion

Oxford Cove.  
Crafted for You





IMAN  
DEVELOPERS